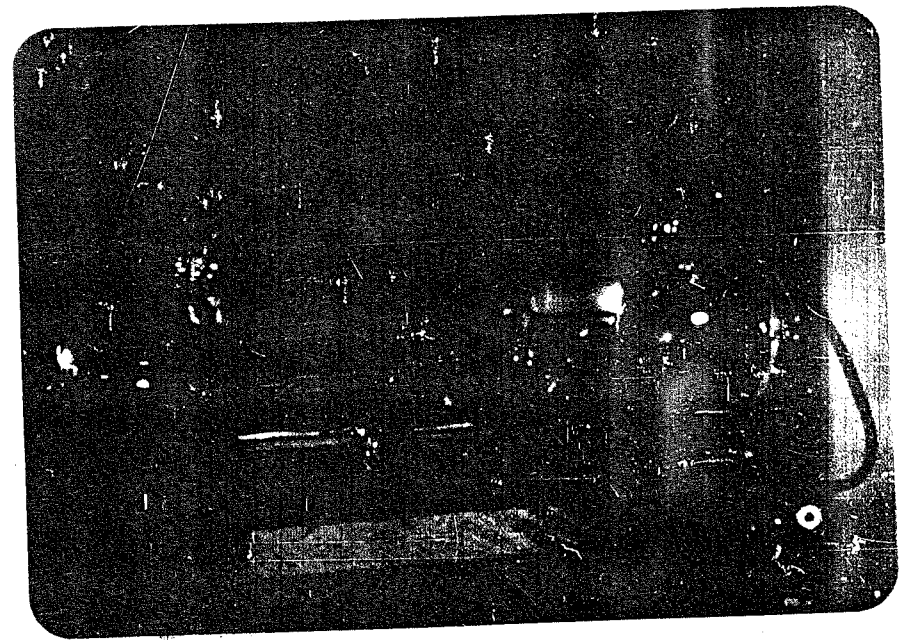


C
612.63
R272P
#3

Wilhelm Reich

THE ORGONE ENERGY ACCUMULATOR

Its Scientific and Medical Use



Orgone energy luminating in an 0.5 micron pressure vacuum tube



Published by

THE WILHELM REICH FOUNDATION
Orono, Bangor, Maine, U. S. A.

1951

Copyr

THE LIBRARY
UNIVERSITY OF MAINE



Gift of
Wilhelm Reich Foundation

LOVE, WORK AND KNOWLEDGE ARE
THE WELL-SPRINGS OF OUR LIFE.
THEY SHOULD ALSO GOVERN IT.

Printed and Distributed through the
ORGONE INSTITUTE PRESS

Publishing House of THE WILHELM REICH FOUNDATION
Orgonon, P. O. Box 153, Rangeley, Maine

ic U. S. A.

OR
/se

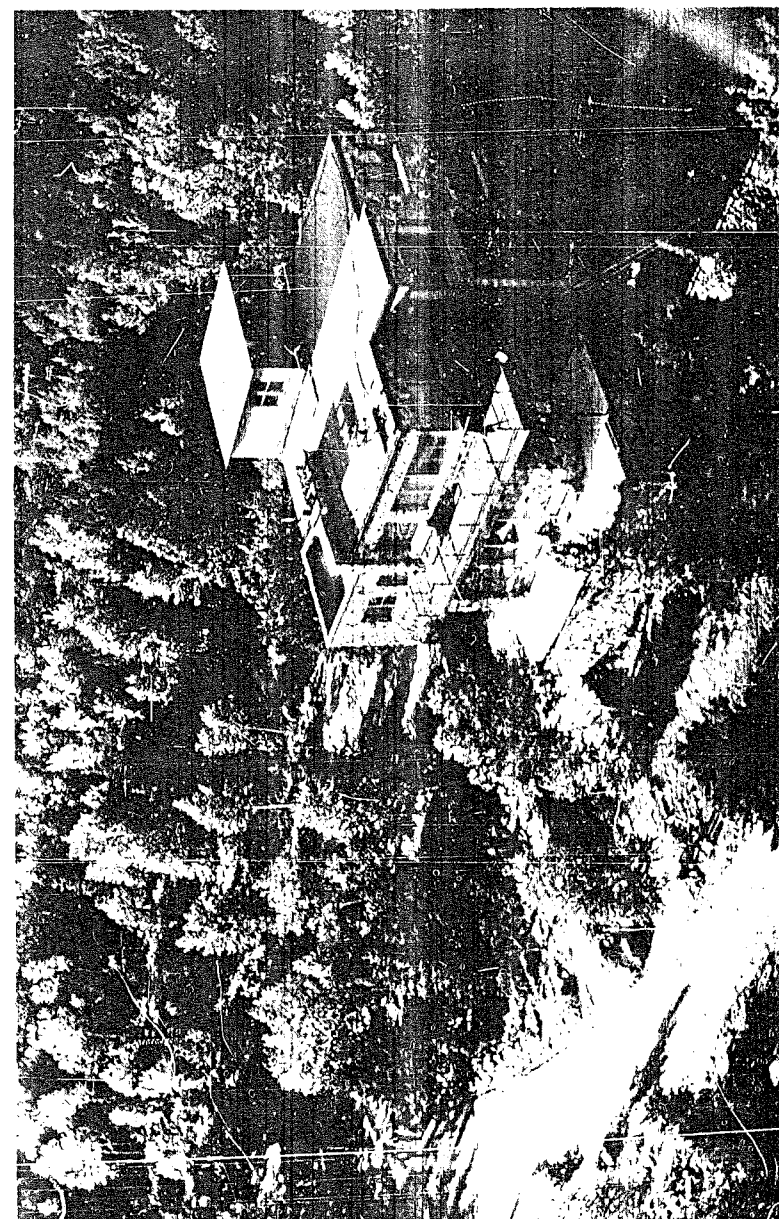
CONTENTS

	PAGE
1. WHAT IS AN ORGONE ENERGY ACCUMULATOR?	12
2. WHO INVENTED THE ORGONE ENERGY ACCUMULATOR?	12
3. WHAT IS LIFE ENERGY AND HOW IS IT RELATED TO COSMIC ENERGY?	12
4. WHAT ARE, CONCRETELY, THE FACTS WHICH PROVE THE EXISTENCE OF SUCH A UNIVERSAL LIFE ENERGY?	13
<i>The orgone energy envelope of the earth</i>	13
<i>"Bad Seeing"</i>	14
<i>"Static"</i>	14
<i>The blueness of the sky</i>	15
<i>Change of form</i>	15
<i>Universality</i>	15
<i>Absorption and reflection</i>	16
5. ORGONE ENERGY ACCUMULATOR	16
6. QUANTITATIVE MEASUREMENTS OF ORGONE ENERGY	19
<i>Temperature difference, To-T</i>	19
<i>Rate of spontaneous electroscopic discharge</i>	21
<i>The organotic Geiger-Müller counter reactions</i>	23
<i>Daily measurement of atmospheric meteorological changes</i>	23
7. THE MEDICAL USE OF THE ORGONE ENERGY ACCUMULATOR	27
<i>Through general organotic irradiation of the organism</i>	27
<i>The "shooter"</i>	34
<i>Basic indications of orgone energy application</i>	41
A. Undercharged biopathies	42
B. Overcharged biopathies	42
8. REQUIREMENTS FOR FORMING AN OPINION ON THE ORGONE ENERGY ACCUMULATOR	44
9. PUBLIC USE OF AND RESPONSIBILITY TOWARD ORGONE ENERGY RESEARCH	45
BIBLIOGRAPHY OF WORKS ON ORGONE ENERGY	48

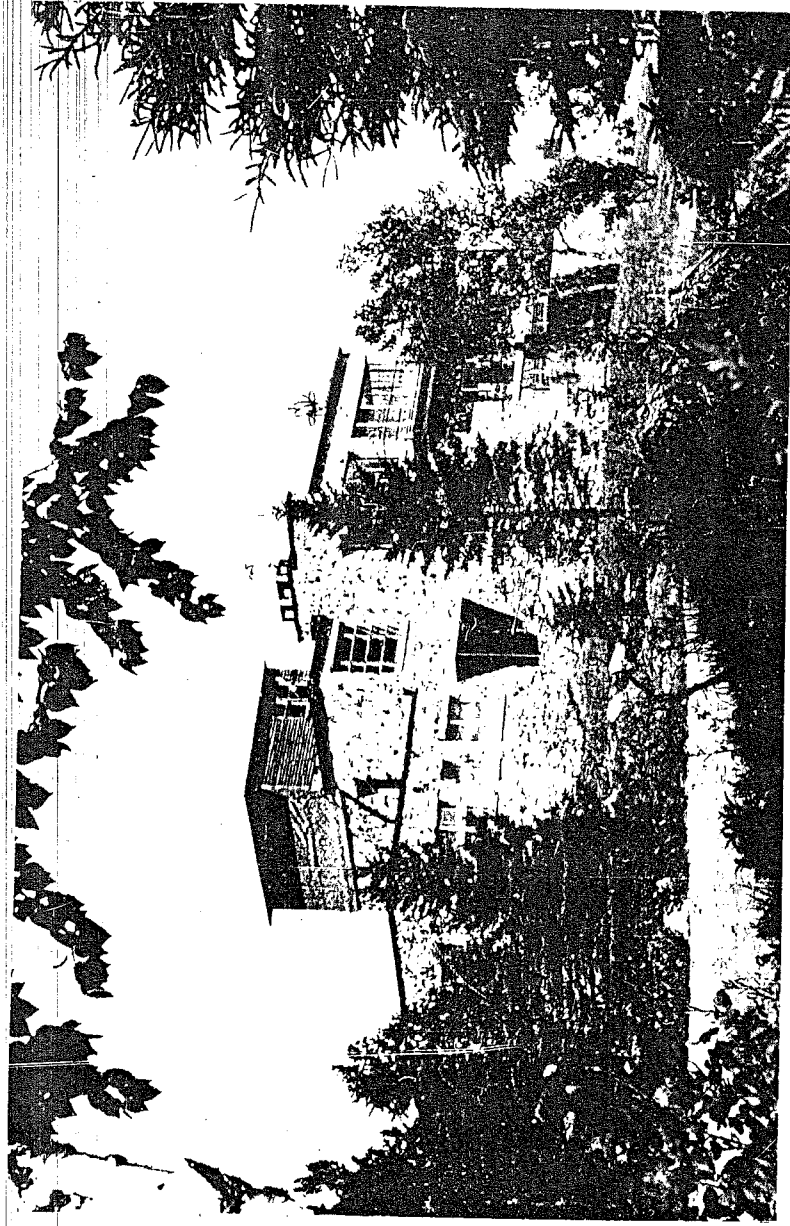
LIST OF ILLUSTRATIONS

ORGONE ENERGY LUMINATING IN AN 0.5 MICRON PRESSURE VACUUM TUBE	<i>Front cover</i>
AIR VIEW OF ORGONON, RANGELEY, MAINE	<i>Back cover</i>

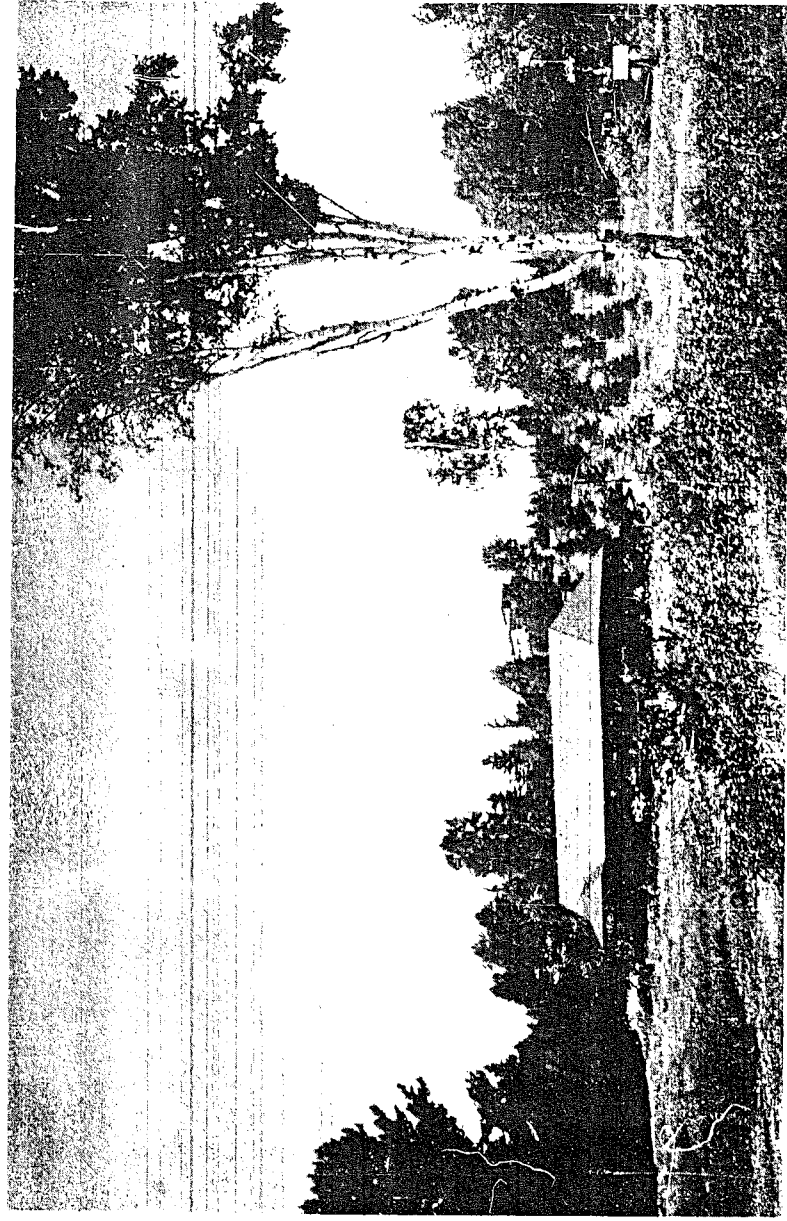
	PAGE
AIR VIEW OF THE ORGONE ENERGY OBSERVATORY, ORGONON, RANGELEY, MAINE	3
ORGONE ENERGY OBSERVATORY, ORGONON, RANGELEY, MAINE	4
THE STUDENTS' LABORATORY WITH OBSERVATORY IN BACKGROUND	5
LABORATORY AT ORGONE ENERGY OBSERVATORY	6
AT THE MICROSCOPES IN THE STUDENTS' LABORATORY	7
AUTOPSY OF CANCER MICE	8
THE FIRST 20-FOLD ORGONE ENERGY ACCUMULATOR EVER BUILT	17
THE METAL-LINED ORGONE ENERGY DARK ROOM AT ORGONON	18
ARRANGEMENT FOR MEASUREMENT OF ORGONOTIC TEMPERATURE DIFFERENCE	24
GEIGER COUNTER (AUTO SCALER 4096) AND GEIGER MONITOR	25
ARRANGEMENT FOR MEASUREMENT OF ORGONE ENERGY FUNCTIONS IN HIGH VACUUM	28
CHART OF METEOROLOGICAL REACTIONS OF ORGONE ENERGY	29
AN ORGONE ENERGY ACCUMULATOR WITH CHESTBOARD AND SHOOTER IN USE	31
AN ORGONE ENERGY BLANKET FOR USE IN BED	32
THE FIRST TYPE OF ORGONE ENERGY "SHOOTER" EVER BUILT	37
AN ORGONE ENERGY BLANKET FOR LOCAL APPLICATION	38
AN ORGONE ENERGY FUNNEL FOR LOCAL APPLICATION	39
LEUKEMIA MICE UNDER EXPERIMENTAL OBSERVATION	40
EXPERIMENTAL MICE IN AN ORGONE ENERGY ACCUMULATOR	40
DEVICE FOR VISUAL OBSERVATION OF ORGONE ENERGY	51
ARRANGEMENTS FOR HIGHPOWER MAGNIFICATION (5000X) AND FLUOROMICROSCOPY	52
MICROPHOTOGRAPHIC AND MICROFILMATIC EQUIPMENT	53
HEAP OF BION VESICLES IN AN ADVANCED STATE OF ORGANIZATION	54
COMPLETELY ORGANIZED PROTOZOON NOT YET DETACHED FROM THE GRASS BLADE	55
CULTURES OF SAND BIONS	56



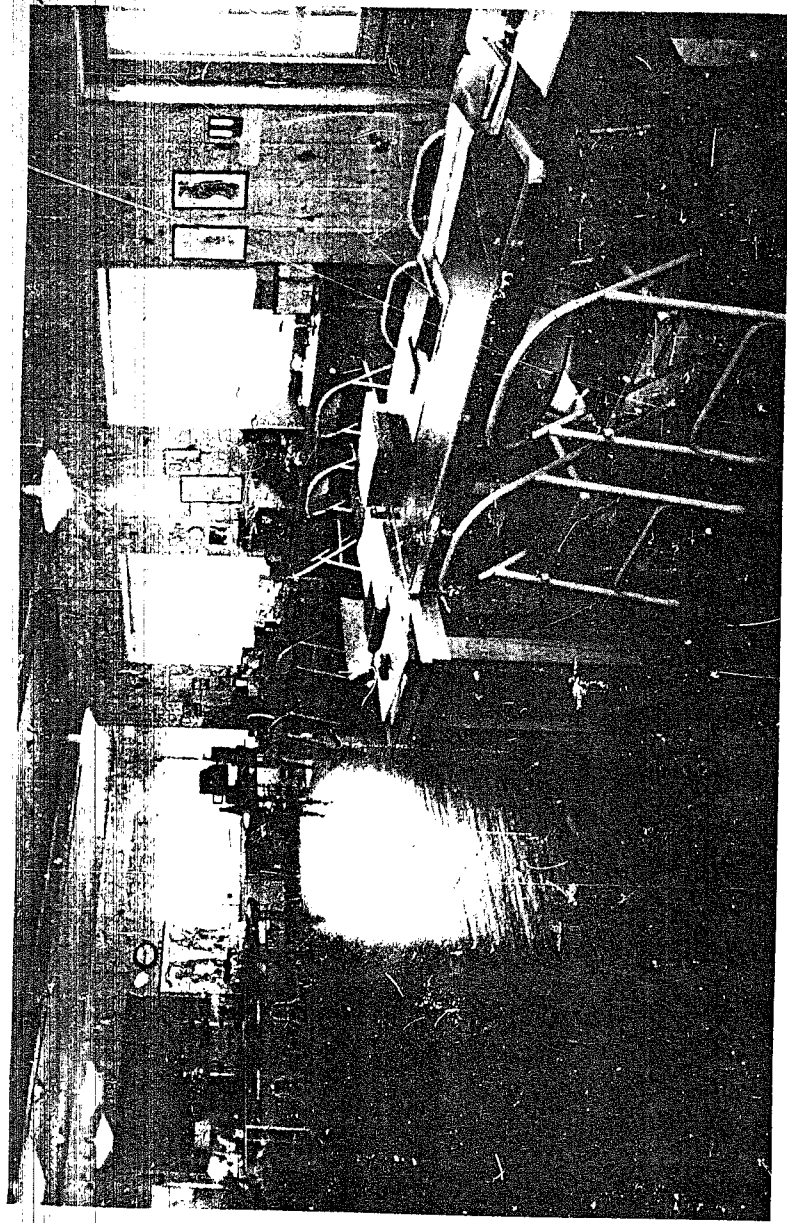
AIR VIEW OF THE ORGONE ENERGY OBSERVATORY, ORGONON, RANGELEY, MAINE



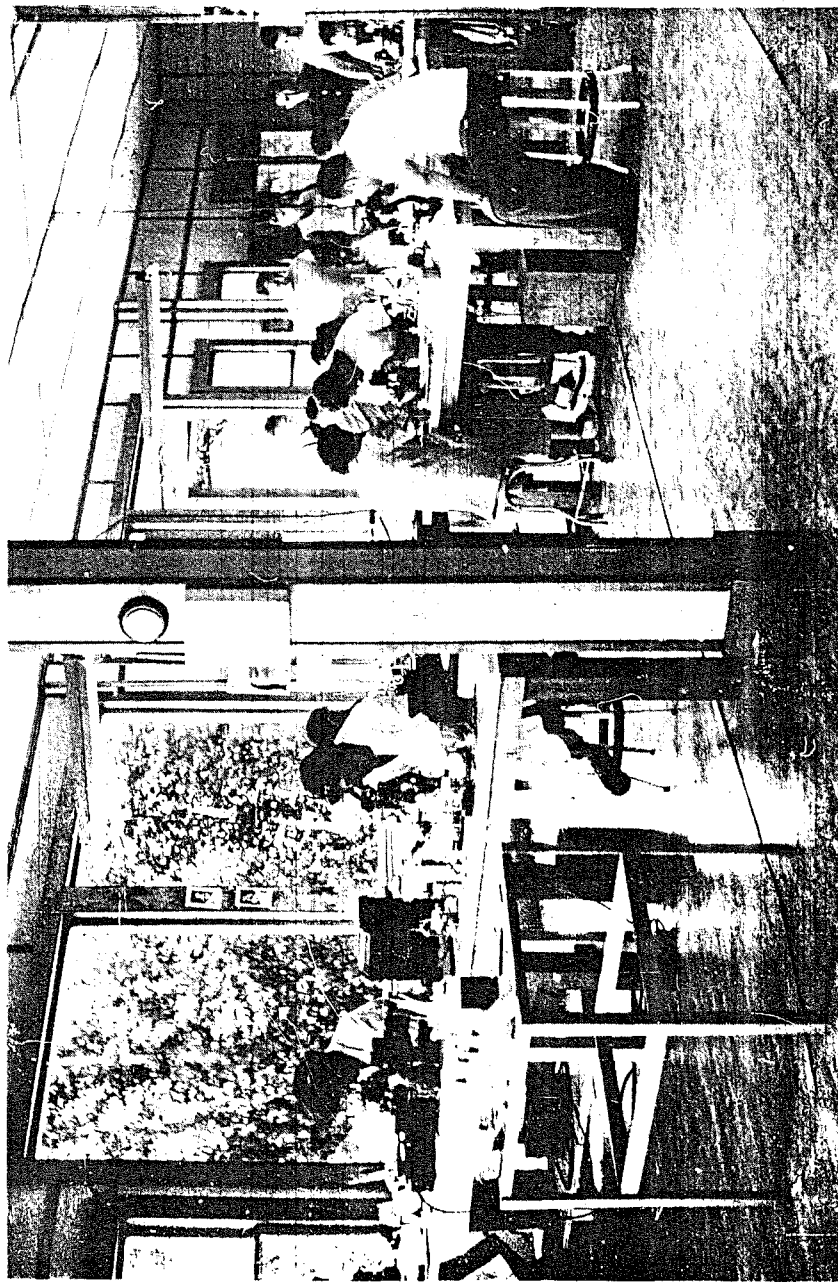
ORGONE ENERGY OBSERVATORY, ORGONON, RANGELEY, MAINE



THE STUDENTS' LABORATORY WITH OBSERVATORY IN BACKGROUND



LABORATORY AT ORGONE ENERGY OBSERVATORY



AT THE MICROSCOPES IN THE STUDENTS' LABORATORY

THE ORGONE ENERGY ACCUMULATOR

Its Scientific and Medical Use

SURVEY

The *Cosmic Primordial Energy*, called COSMIC ORGONE ENERGY (COE), was discovered between 1936 and 1939 in Norway. The initial discovery was basically completed in 1940 in Maine in the USA. It was then the result of complicated researches in the realms of nature in general and human bio-energetic functions in particular over a period of some 20 years. The discoverer is WILHELM REICH, M.D.

Since 1940, a scientific organization, comprising physicians, psychiatrists, physicists, biologists, educators and social workers, and with daughter institutions in several countries, has slowly developed around the discovery of the cosmic orgone energy.

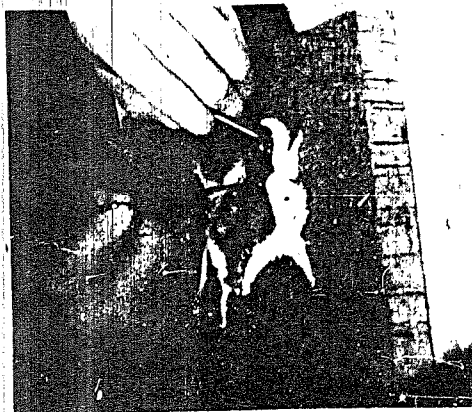
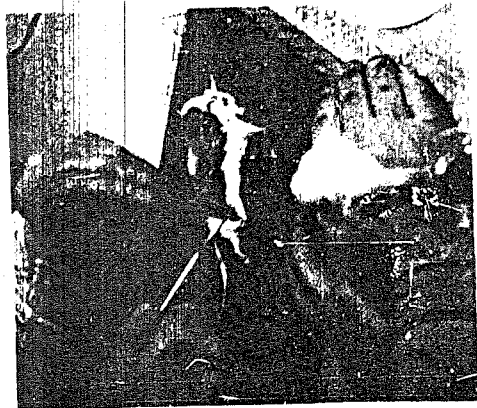
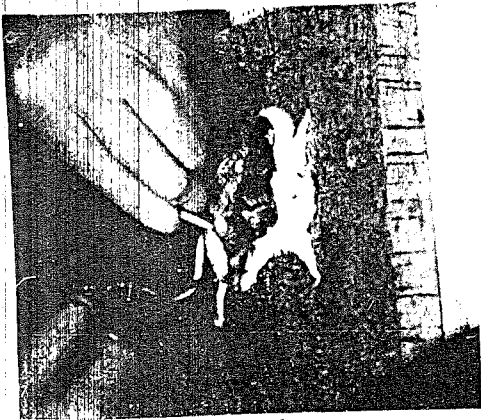
This basic and revolutionary discovery has forced its own way into the public. The motto of its slow penetration of the public mind has seemed to be:

"NO PROPAGANDA IS THE BEST PROPAGANDA"

Although known, esteemed and beloved in many lands in certain academic circles, the discovery of the cosmic energy remained unknown until very recently to the public at large. It did not enjoy an instant, comet-like appearance among the broad public. In accordance with its bio-energetic functions, its progress was like the slow growth of a tree rather than the brilliant flash of a bolt of lightning. Neither did it suffer the ill fate of comet-like disappearance from the public eye. It is here to stay.

In full harmony with its biological implications, the discovery somehow preferred the role of an inconspicuous but crucial event to that of the appearance of a comet or the occurrence of an earthquake. Many with knowledge of the great development, and overanxious

AUTOPSY OF CANCER MICE



friends used to admonish the discoverer to "do something practical" and noisy about his discovery; to establish an "office of public relations"; to "secure the 'good will' of the public"; to "get big write-ups in the daily newspapers" about the discovery of the life energy; to obtain the okay of this or that authority in medicine or physics; in short, to do many of those things which are usually done by people who want to make their names known or who wish to sell a product of applied science such as an icebox, a radio, a television set, or a drug. The widespread misuse of advertising held us back.

The discoverer and his co-workers felt at times guilty of neglect of duty, of missing the big chance, of not living up to the expectations of the censors of public behavior. More than that, the silence which surrounded the great discovery in the circles of big business, big science, and big medicine constituted at times a real threat to the scientific workers in the field of ORGONOMY. More and more people talked about the discovery—at tea parties, in hotel lobbies, in medical offices, in government circles, in the offices of the secret police in many countries. It was talked about in good as well as bad ways: here people of many walks of life praised the discovery as the greatest deed in science in many centuries; there it was ridiculed and slandered in a very dangerous way. As usual, the bad rumor traveled much faster than the good one. Still, no attempt was made on the part of the small group of workers in organomy to get into the newspapers, to hire an advertising agency, to obtain the favor and praise which the public so lavishly and often so ignorantly bestows upon *innocent* discoveries.

There were many and very serious reasons for not following the usual way of getting the discovery across in a big and sudden way:

First, the facts were flowing in much too rapidly to be handled properly and fully by a very few people.

Second, each single new fact which revealed itself to the organomic researcher seemed to contradict most cherished scientific beliefs of long standing, as, for instance, the air germ theory in bacteriology; the theory of "static electricity" in electrophysics; the theory of "heat waves" in meteorology; the theory of "cosmic radiation" allegedly coming down to us from faraway "empty space"; the interpretation

of the many varied and lawful functions of the spontaneous electroscopic discharges as "mere" results of an incomprehensible "natural leak"; The Second Law of Thermodynamics with its entropy; the theory of atoms and electronic particles as the primal constituents of the universe; the utter awe which governed any and every thought of a concrete, measurable, and actionable *life energy*; the clear-cut microscopic observations which disclosed the natural organization of single-cell organisms from decaying tissue and even from free orgone energy in frozen, highly-charged water (Experiment XX) and which so sharply refuted the basic trends in present-day biology; and many, many similar facts, each single one of cosmic dimensions.

Third, the one and paramount question that seemed to resist an answer was why no one among many thousands of skilled, conscientious, hard-working scientists had ever hit upon the interconnections between these abundant facts and observations which conclusively demonstrated the existence of a visible, measurable and manageable, ubiquitous cosmic energy.

Fourth, the emotional reactions to the discovery in some quarters of laymen and scientists alike were of such a dangerous nature that it became necessary first to comprehend and to meet this animosity.

Fifth, with each new year that passed in hard labor on the new functions the basic laws became simpler but at the same time the dimensions of the discovery grew to frightening proportions. It became necessary to restrict oneself to small sectors of the orgone energy functions and to proceed only very slowly and cautiously. A big sweep in publicity would have swamped the few organomists with arguments and counter-arguments, with details as yet unexplored, and with a tremendous amount of public debate which would certainly have choked the basic research job to death.

We may stop at this point. The arguments for not following the usual way of proclaiming discoveries were many and weighty. Dangerous as this procedure was, due to suspicions which it aroused ("Why aren't you mentioned in the newspapers?" and, "Physicist so-and-so has never heard of you"), it was unavoidable.

However, the basic findings had been published since 1938 in a

continuous stream of publications which were available in many libraries all over the world, but which were little appreciated by the shapers of public opinion.

This situation began to change as the international crisis grew and spread all over the world. With atomic warfare on the horizon, and with our knowledge of the bio-energetic effects of orgone energy at our disposal, we decided to proceed at a faster rate, but not too anxiously. Over the years since 1940 more and more people came to know about the orgone energy in many lands; therefore, it seemed possible now to meet the growing interest with an increased effort at dissemination of information.

The present pamphlet gives information on the functioning and construction of the ORGONE ENERGY ACCUMULATOR.

1. WHAT IS AN ORGONE ENERGY ACCUMULATOR?

The Orgone Energy Accumulator is an instrument assembled and materially arranged in such a manner that LIFE ENERGY, present in the atmosphere of our planet, can be collected, accumulated, and made usable for scientific, educational and medical purposes. (Cf. fig. 7, p. 31.)

2. WHO INVENTED THE ORGONE ENERGY ACCUMULATOR?

The Orgone Energy Accumulator (OEA) was invented by the research scientist and physician, Wilhelm Reich, M.D., during 1940 in the USA.

3. WHAT IS LIFE ENERGY AND HOW IS IT RELATED TO COSMIC ENERGY?

The existence of a specific kind of energy which directs and maintains LIFE has been theoretically assumed for a long time by many natural philosophers and scientists. Wilhelm Reich succeeded in con-

necting known facts and in finding new facts which he coordinated with the known facts in such a manner that the existence of a specific life energy became concretely demonstrable, usable, and measurable. ORGONE ENERGY is the name given by Wilhelm Reich to this specific life energy WITHIN the living organism. The existence of orgone energy OUTSIDE the living organism, in the atmosphere, was also demonstrated. The INNER (life-) energy derives from the OUTER orgone energy in the atmosphere. This is quite logical, since nothing can exist within the living organism that did not previously exist in the environment of the living organism.

4. WHAT ARE, CONCRETELY, THE FACTS WHICH PROVE THE EXISTENCE OF SUCH A UNIVERSAL LIFE ENERGY?

In order to comprehend the many known facts and phenomena as related to the existence of a specific life energy, it is necessary to abandon several misconceptions in scientific thinking.

The Orgone Energy Envelope of the Earth

Probably everybody has seen the wavelike quivering and flickering of the atmosphere on the ground, above mountain tops, on roads, lakes, on the ocean, etc. These wavelike phenomena are commonly called "heat waves." However, they have nothing to do with "heat." Heat itself is a subjective feeling, and not energy or an objective fact. Objective is only the expansion of quicksilver in a thermometer. Heated air ascends; the waves visible on mountain tops do *not* ascend, but move on clear days from West to East, in the direction of the rotation of the earth. They move *faster* than the globe; otherwise, they could not be seen moving at all. If these waves were "heat," they should always be visible on "hot" days and should disappear on "cold" days. This is not the case: One can see the "heat waves" on high mountain tops and through telescopes even at 30° below zero; and one can see them *disappear* on hot summer days shortly before heavy rain or thunderstorms. Therefore, these waves have nothing to do

with "heat." "*Something*" is moving from West to East in a wavy manner; it cannot be air, since air is not visible; one cannot see a gust of wind move, even if it has a speed of 60 miles per hour. Furthermore, these waves usually move from West to East, while the wind may blow from any direction. It is more likely that winds and storms in the atmosphere are results of shifts in atmospheric energy rather than the other way around. The "heat waves" of the weather man are the same thing as the

"Bad Seeing"

of the astronomer. Astronomers suffer greatly in their observations of stars from what they call "bad seeing." The required sharpness of the stars is greatly disturbed by the wavy flimmering and movement in the atmosphere. Recently attempts have been made to eliminate this bad seeing. It is the manifestation of exactly what orgonomy studies and uses as "atmospheric orgone energy."

"Static"

In electrophysics the atmospheric energy is referred to as "STATIC." Every radio listener knows the crackling noises heard on the radio, especially before and during stormy weather. He dislikes the shock he gets at times if he touches metal on his car on dry days. The flier knows the static charges at the tips of his plane wings very well and fears them. Devices have been invented to eliminate these charges on airplanes. Now, while it is well known that the air is full of "static" and that a single bolt of lightning discharges millions of volts of energy, it is *at the same time* assumed that the air is FREE of electricity: Otherwise it would not and could not be a good insulator for electricity, a fact well-known to every electrician. How can the air at the same time be FULL of energy and FREE of energy? This is impossible in terms of electricity. It is not only possible but *necessary* to assume that "static" is not the same energy as the one we obtain by moving wires in magnetic fields, the so-called galvanic electricity. "STATIC" IS ONE OF THE MANIFESTATIONS OF THE ATMOSPHERIC ORGONE ENERGY. This energy eluded electrical science heretofore because *it is not electricity*. It follows entirely different laws than electricity. It is somehow, no

one knows how to this day, the source of all electrical and magnetic energy.

The Blueness of the Sky

BLUE IS THE SPECIFIC COLOR OF ORGONE ENERGY WITHIN AND WITHOUT THE ORGANISM. Classical physics tries to explain the blueness of the sky by the scattering of the blue and of the spectral color series in the gaseous atmosphere. However, it is a fact that blue is the color seen in all functions which are related to the cosmic or atmospheric or organismic orgone energy:

Protoplasm of any kind, in every cell or bacterium is blue. It is generally mistaken as "refraction" of light which is wrong, since the same cell under the same conditions of light loses its blueness when it dies.

Thunder clouds are deeply blue, due to high orgone charges contained in the suspended masses of water.

A completely darkened room, if lined with iron sheet metal (the so-called "Orgone Room"), is not black, i.e., free of any light, but bluish or bluish-gray. Orgone energy luminesces spontaneously; it is "luminescent."

Water in deep lakes and in the ocean is blue.

The color of luminating, decaying wood is blue; so are the luminating tail ends of glowworms, St. Elmo's fire, and the aurora borealis.

The lumination in *evacuated tubes charged with orgone energy* is blue. (Cf. cover photo.)

Change of Form

In its naturally given condition or seen in the darkened orgone energy room, orgone energy is patterned like slow-moving fog, i.e., more or less evenly dispersed, with ever-changing, thread-like concentrations. If excited in any way, e.g., by the presence of living organisms or electromagnetic energy, the concentrations increase in density and speed; they appear in the completely darkened room as heavy streaks changing further into bright, fast-moving, yellowish sparks.

Universality

There is no known way of delineating orgone energy, of separating

a certain amount from the rest of the cosmic orgone energy ocean. Orgone energy penetrates everything at different speeds. It is present everywhere, different only in density or concentration. Orgone energy accumulators operate everywhere.

Absorption and Reflection

Matter which is a good insulator for electrical energy, or, what amounts to the same thing, is a poor electrical conductor, is a good *absorber* of orgone energy; on the other hand, metallic matter does not hold orgone energy but repels it rapidly *after attraction*. This can be demonstrated by certain experimental set-ups (cf. Bibliography, No. 5d).

The qualities of the atmospheric orgone energy just described—universality, absorption by non-metallic and reflection by metallic matter—are the basic principles on which rests the construction of the

⑤ ORGONE ENERGY ACCUMULATOR

Until the discovery of the above properties of the atmospheric orgone energy, its function—usually called “static”—has remained inoperable. As a matter of fact, it was only a disturbing nuisance in electronics, aeronautics, radio technology, etc. With the invention of the orgone energy accumulator it became **USABLE**.

In order to use the atmospheric energy it has first to be collected and concentrated. It is collected by a certain arrangement of organic and metallic material. The efficiency of the collection and concentration of atmospheric orgone energy (= LIFE ENERGY) depends:

- a) On the *kind of non-metallic material* used; there are *good* (plastic) and *bad* (wood) absorbers.
- b) On the *kind of metal* used; only iron can be used for medical purposes.
- c) On the degree of the average humidity in the atmosphere; water eagerly attracts orgone energy, and vice versa. Therefore, the drier

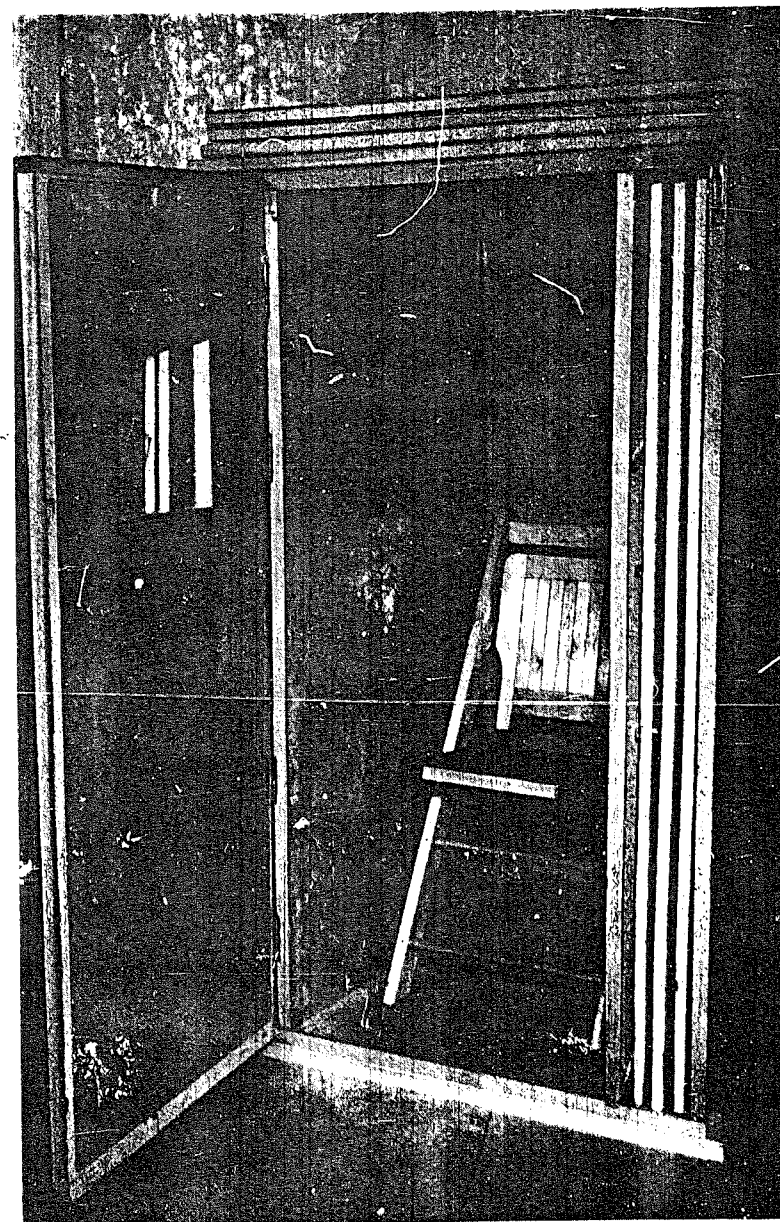


FIG. 1. THE FIRST 20-FOLD ORGONE ENERGY ACCUMULATOR
EVER BUILT

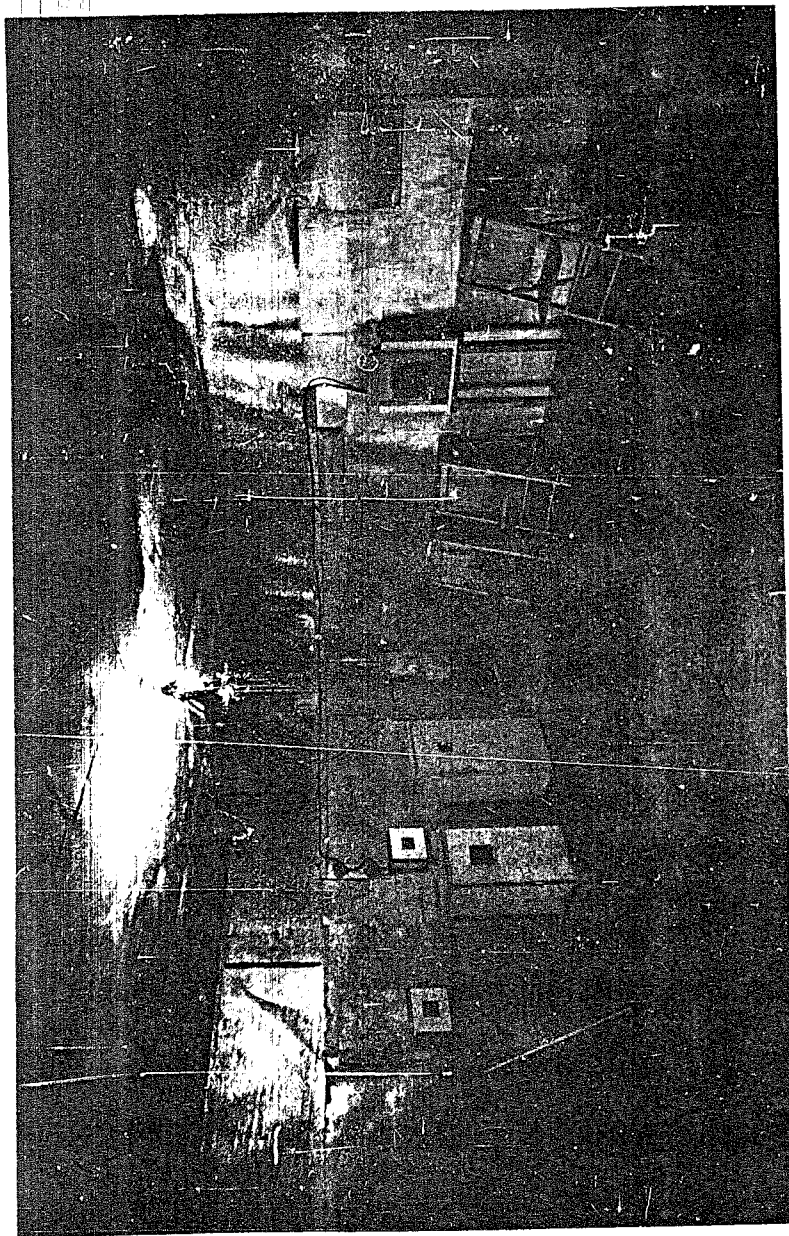


FIG. 2. THE METAL-LINED ORGONE ENERGY DARK ROOM AT ORGONON

the climate the better the accumulation; 40-50% relative humidity is a good condition for orgone energy concentration.

d) On the *geographic latitude* where the accumulation is taking place; the closer to the equator the more efficient is the absorption; a 2-fold orgone energy accumulator is more efficient in Israel than in London.

e) On the *altitude*; the higher above sea level, the freer is the atmospheric energy from gaseous admixtures and the better its functioning.

f) On the *number of layers* used in the accumulating device: "ONE LAYER" consists actually of two layers, one of organic matter on the *outside*, the other of metallic matter on the *inside*. Organic matter absorbs and holds, while metal attracts and reflects orgone energy quickly. It is, therefore, obvious that by layering the accumulator *always* with organic matter toward the outside and metallic toward the inside, a *DIRECTION* is given to the orgone energy with a *potential* (ORGONOMIC POTENTIAL) *directed from the outside toward the inside*.

g) On the *closeness of the inner walls to the organism within the accumulator*. The closer the surface of the living organism to the metal wall the stronger the effect of the orgone irradiation.

b) On the number of accumulators present in a room or in a building; the more accumulators, the higher the atmospheric charge in the room and the greater the effects within the single accumulator. The presence of an Orgone Energy Room greatly enhances the total charging process. (Cf. fig. 2, p. 18.)

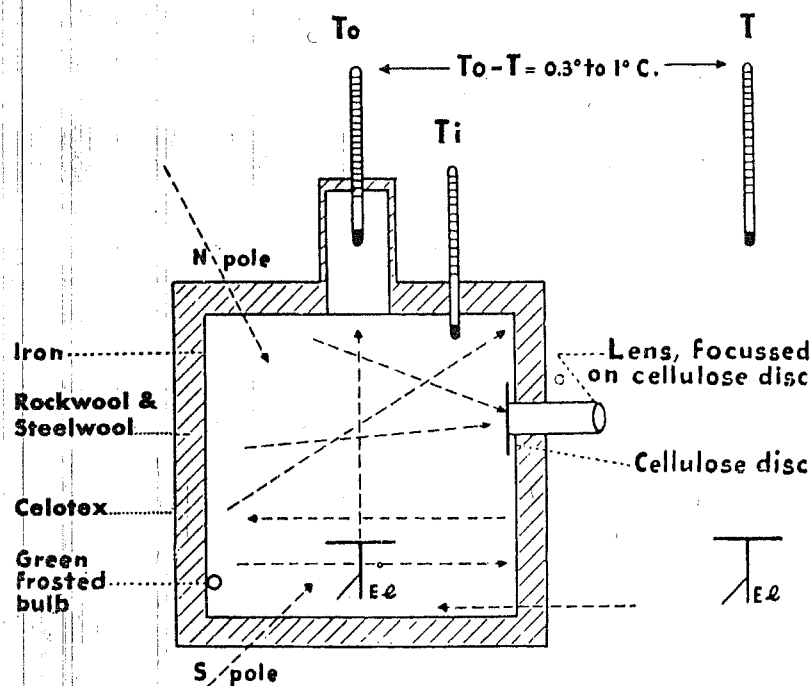
6. QUANTITATIVE MEASUREMENTS OF ORGONE ENERGY¹

Temperature Difference, $T_o - T$

The orgone energy freely oscillates within the inner metal walls of the orgone energy accumulator. It is repelled by the inner metal on all sides. This means stoppage of the kinetic energy of the orgone energy. Stoppage of kinetic energy manifests itself on the thermometer

¹ Only a survey can be given here. For details, cf. Bibliography, No. 5e, f and g.

as *increase of temperature*. This heat can be felt at the palms, close to the inner, COLD metal walls. Biologically weak people feel the heat only slightly or not at all. The temperature, as compared with room temperature, is highest *above the upper metal plate*, slightly lower *within the orgone accumulator*, and lowest in the air of the room surrounding the orgone accumulator, at least 3 feet distant and at the same height. The temperature difference ($T_o - T$) is constantly positive, varying only in degree with the weather: Bad weather—low or zero; clear, good weather—up to 1.5° in the closed room and with certain arrangements, up to 20° C. in the open air.



BASIC DESIGN OF EXPERIMENTAL ORGONE ACCUMULATOR. SECTION.

T_o = temperature above accumulator; T_i = temperature within accumulator; T = control (temperature of air in room). El = electroscope. - - - - - \rightarrow = direction of radiation. Size: 1 cubic foot.

The constant temperature difference at the orgone accumulator invalidates the *absolute* validity of The Second Law of Thermodynamics which assumes that there exists only a potential from the higher to the lower energy level. The orgone accumulator demonstrates the principle of an energy shift from the LOWER to the HIGHER level, the BUILD-UP of energy level, the creation of a higher potential: ORGONOMIC POTENTIAL FROM LOW TO HIGH. This law applies to living organisms as well as to heavenly bodies, such as sun and planets. They too possess a level of energy higher than the surrounding environment. The $T_o - T$ does *not* increase with the number of layers in a linear fashion.

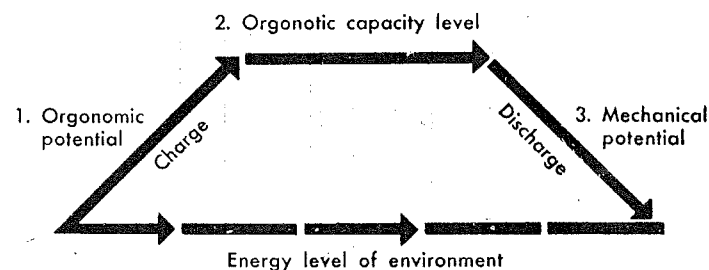


Diagram of the ORGONE ENERGY METABOLISM in living bodies

During the past two years a "negative" temperature difference has been found under certain atmospheric conditions (hurricanes, etc.). It needs further careful study.

At the Orgone Energy Observatory at Orgonon, 1° C. difference ($T_o - T$) per 256 seconds has been provisionally established as the unit of measurement, the $T - \text{org.}$ (Cf. also Bibliography, No. 35 and Fig. 3, p. 24.)

Rate of Spontaneous Electroscopic Discharge

In contradistinction to the ionization effect in the electrical realm, electroscopes, previously charged with orgone energy by means of plastic disks from the hair of the head, DISCHARGE SLOWER IN HIGHER ORGONE ENERGY CONCENTRATION AND FASTER IN LOWER ORGONE ENERGY CONCENTRATION. The more layers in an orgone accumulation the

slower the discharge. The relationship of the rate of discharge *within* the orgone accumulator and in the *free air* provides a measure of the "potential" between orgone accumulator and free air. This potential is reduced in bad weather and becomes steep again (up to 8 times) in dry and clear weather. A multilayer orgone accumulator will still show a difference of orgone energy tension even in very stormy weather. A one-layer orgone accumulator may lose the organomic potential completely.

The formula for the measurement of the *op* (orgone energy potential) in the orgone accumulator or in the free air can easily be obtained by division of time of discharge (*T*) by the difference between initial charge (*Eo*) and remaining charge (*Er*):

$$OP = T/Eo - Er$$

The *op* can also be measured, more simply, in time—ORGS (second—, minutes—, hour—ORG), i.e., *the amount of seconds, minutes or hours which is necessary to discharge a certain, previously set amount of orgone energy charge of the electroscope*. The orgone energy laboratories use as the unit of organotic charge one or two electroscopic scale divisions, calibrated in such a manner that one scale division represents a charge of approximately 256 (4⁴) volts = ONE ORG. The entire scale of 90° has 10 divisions; the divisions around the center of the scale are used for measurements. The formula for the organomic (electroscopic) potential between air and orgone accumulator (*OA*) is given by:

$$OP = \frac{OP\ OA}{OP\ Air}$$

or in *Time Orgs*

$$OP = \frac{TIME - ORG\ OA}{TIME - ORG\ AIR}$$

The spontaneous electroscopic discharge, thus, is not something to be lightly discarded; it is the exact expression of the orgone energy tension in the atmosphere; it varies, usually together with the difference in temperature (*To—T*), with the weather conditions.

For further information, cf. Bibliography, No. 5f and 5g.

The Orgonotic Geiger-Müller Counter Reactions

Orgone energy, both organismic and atmospheric, is easily demonstrable with the Geiger counter in many different ways (cf. fig. 4, p. 25). One special way of measuring orgone energy is through orgone energy charges in 0.5 micron pressure vacuum tubes. The counts per minute (CPM) range from a low of approximately 3000 CPM to as high as 25000 CPsec. in high vacuum. These facts have been fairly well elaborated during the years. Orgone energy in vacuum is already being used in weather determination (cf. Bibliography, No. 17). Also, the relationship between orgone energy (*OR*) and nuclear radiation (*NR*) is being studied continuously. The available knowledge will be made accessible to the public as soon and as completely as the safety of the work permits (cf. Bibliography, No. 18).

Daily Measurement of Atmospheric Meteorological Changes

Measurements A, B and C deal with *atmospheric* orgone energy charges, each in its own specific manner. The Wilhelm Reich Blood Tests deal with the bio-energetic charges of the blood system, which, to some extent, are dependent on the atmospheric conditions. Within the realm of the atmospheric orgone charges it is now possible to co-ordinate the organotic measurements among themselves and collectively with the barometric pressure. The chart on p. 29 gives a concrete example of such coordination. The meteorological measurements are regularly done daily at noon. During storms and other unusual conditions more frequent readings are taken.

The basic characteristic of the atmospheric reactions of orgone energy is the *drop* in all readings during bad, rainy or stormy weather, and the *rise* in all readings toward and during clear and sunny weather. There is for each experimental setup a certain RANGE of change with an upper and a lower limit. These limits are transgressed only rarely, indicating severe disturbances of the atmospheric orgone energy conditions. Position of the earth in space during its yearly travel has some, as yet not fully understood influence on the readings. So have sunspots

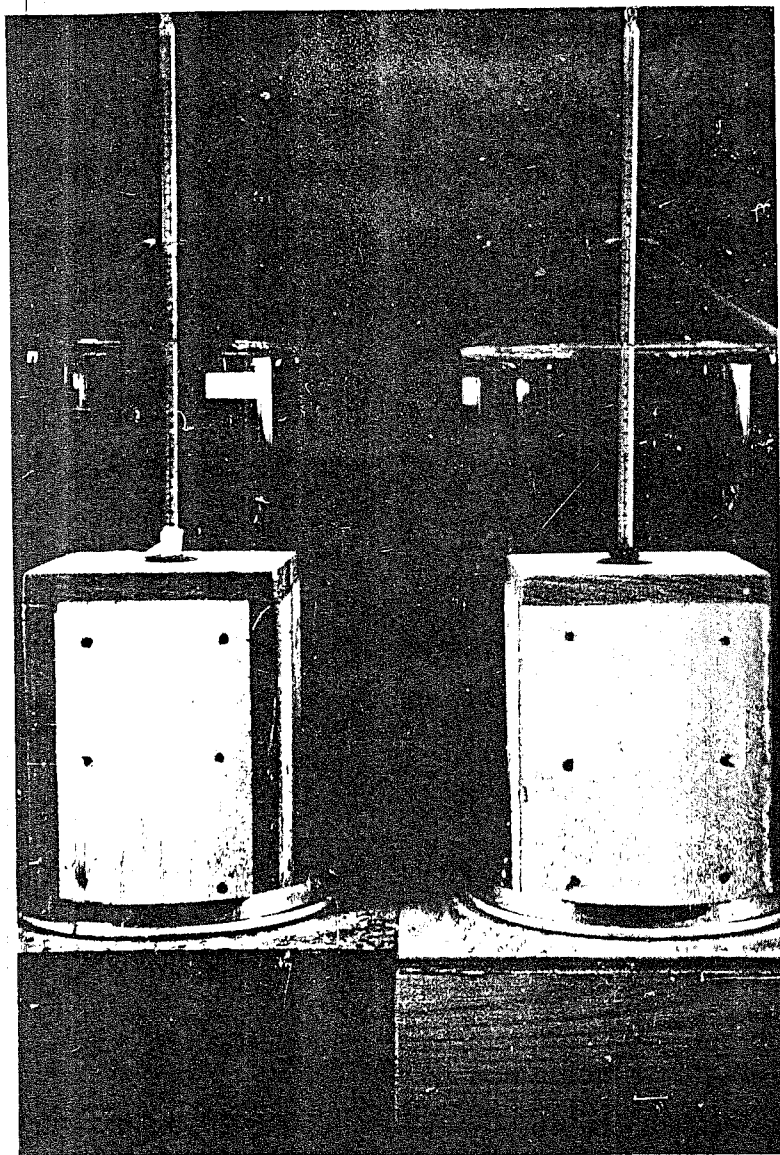


FIG. 3. ARRANGEMENT FOR MEASUREMENT OF ORGONOTIC TEMPERATURE DIFFERENCE, USED IN DAILY MEASUREMENT OF ATMOSPHERIC TENSION

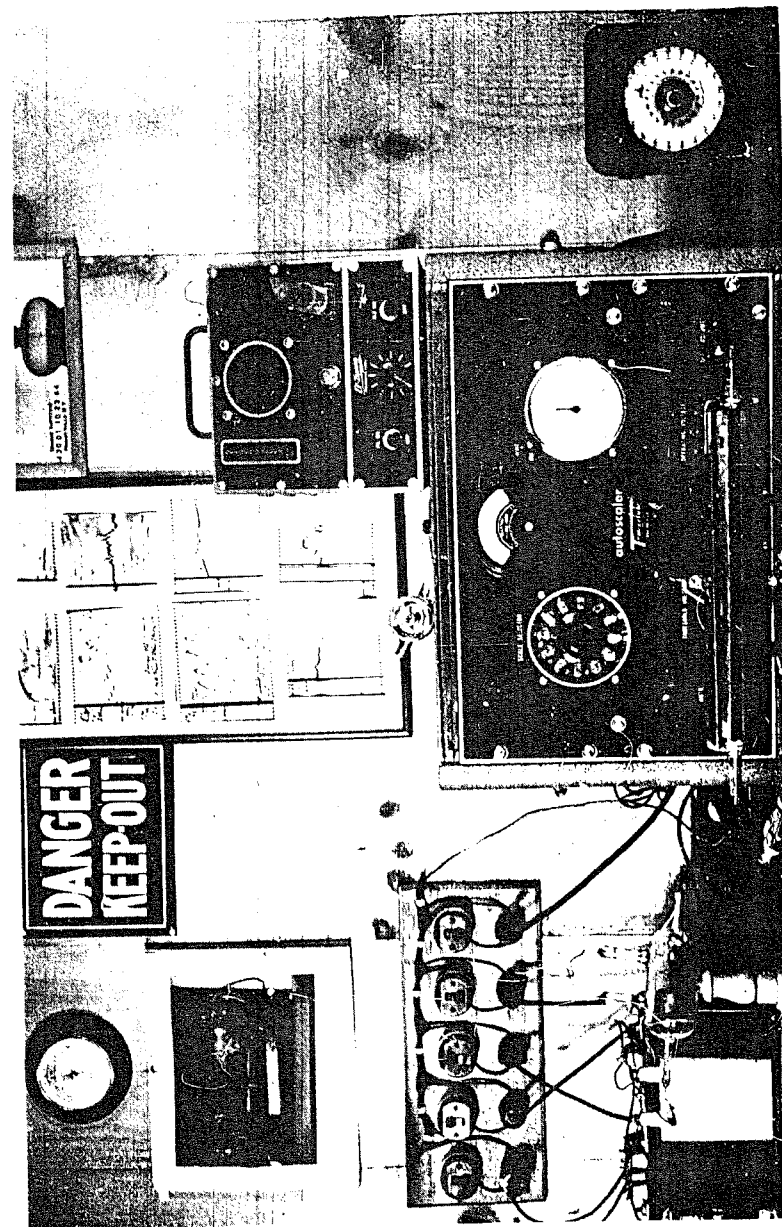


FIG. 4. GEIGER COUNTER (AUTO SCALER 4096) AND GEIGER MONITOR USED IN MEASUREMENT OF ORGONE ENERGY PULSES IN HIGH VACUUM

and distant hurricanes or earthquakes. However, *local* weather changes are predictable. A sharp drop in the temperature difference (To—T) and a sharp speed-up of the electroscopic rate of discharge (low Time—Org) are regularly followed by poor weather conditions, and vice versa.

Much has still to be elaborated, especially distant meteorological effects upon the local readings; but on the whole, the basic functions appear well coordinated and practically usable, as well as capable of further development.

Cf. Bibliography, Nos. 17 and 22.

The difficulty involved in these readings for the scientist who is not trained in orgone physics is the approach from an entirely new theoretical angle. Whoever clings to The Second Law of Thermodynamics will not understand the temperature difference. He will feel inclined to do away with it as "only" heat convection, "only" improper shielding, "only" this or "only" that. He will fail to see its organotic, atmospheric significance.

If he believes in the "natural leak" point of view regarding the spontaneous electroscopic discharge, he will fail to stick to the measurements over long periods of time and, therefore, will fail to convince himself that there is a basic law behind these "spontaneous" discharges, laws pertaining to the concentration of atmospheric energy. He then will naturally fail to understand the slower discharge in the orgone energy accumulator.

If he believes in the hypothesis of "empty space," he will not understand that an 0.5 micron pressure vacuum can luminate and that it can vary with the weather changes.² On the other hand, if he knows that all space is filled with orgone energy, he will readily comprehend what he sees (cf. cover photo).

If he believes in an atmosphere simultaneously *free* of charges and *full* of "static," he will get confused if he has to explain the lightning or even the "heat lightning" with no clouds in the sky.

Thus, the atmospheric changes of orgone energy functions provide

² Cf. Bibliography, Nos. 8 and 9.

an excellent source for obtaining information on the orgone energy functions outside the living organism, and, accordingly, for preparing a thorough understanding of the orgone functions *within* the organism. Atmosphere and organism give the same pulse reaction at the Geiger counter, just as, chemically, organism and atmosphere are of the same basic chemical nature: O, H, C, and N. (Publication in preparation.)

7. THE MEDICAL USE OF THE ORGONE ENERGY ACCUMULATOR

Through General Organotic Irradiation of the Organism

The medical use of the orgone energy accumulator is accomplished by daily, regular sittings within the radiating enclosure. Ventilation of the enclosed space is secured through openings above and beneath the door, large enough to guarantee air circulation. The atmospheric orgone energy does not "seep" through openings, but penetrates the solid walls. In relation to the accumulator, the organism is the *stronger* energy system. Accordingly, a potential is created from the outside toward the inside by the enclosed body. Biophysically speaking, the living organism constitutes the first, and the enclosing accumulator the second, enveloping, organotic radiating system. The energy fields of the two systems make contact and after some time, dependent on the bio-energetic strength of the organism within, both the living organism and the energy field of the accumulator begin to "luminate," i.e., they become excited and, making contact, drive each other to higher levels of excitation. This fact becomes perceptible to the user of the orgone energy accumulator through feelings of stronger prickling, warmth, relaxation, reddening of the face, and, objectively, through increased body temperature (0.5 to 1.5° F.). The body temperature should be measured *before* and *during* the irradiation (*not after* the sitting).

There is no mechanical rule as to HOW LONG one should sit in the accumulator. Bio-energetically stronger people need shorter irradiation.

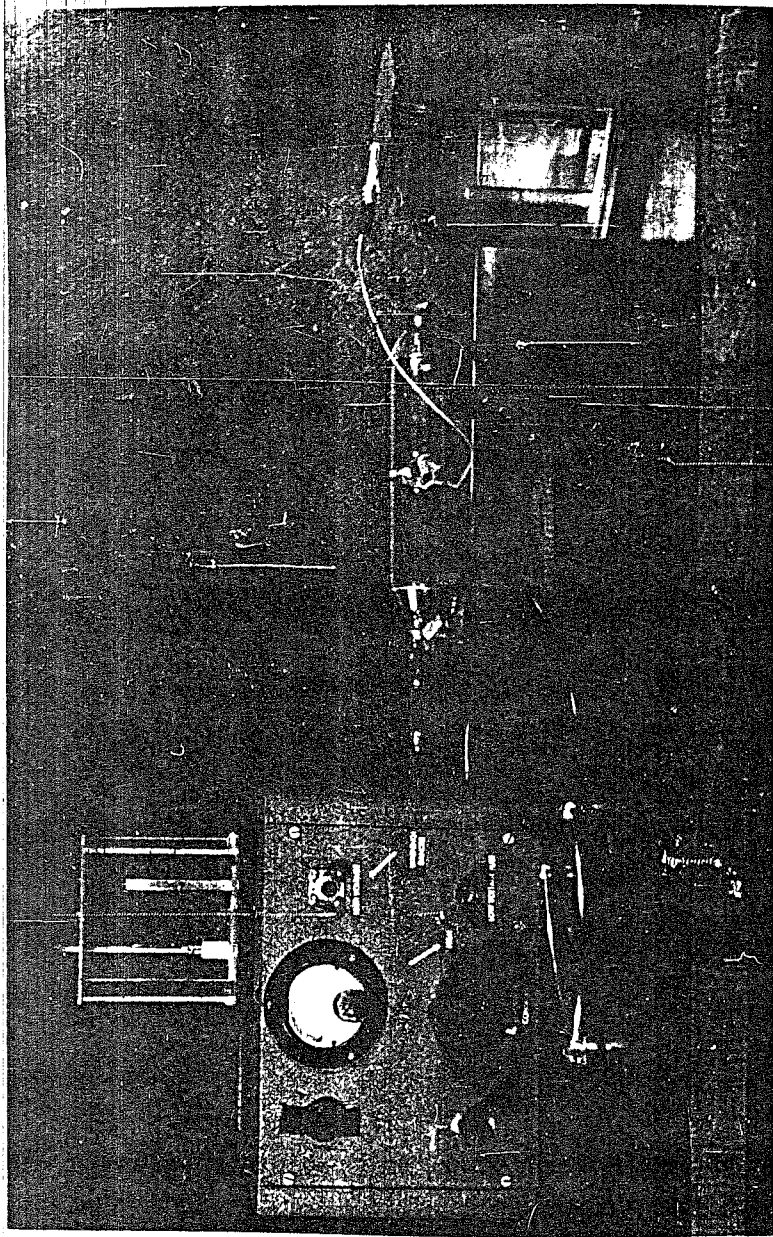
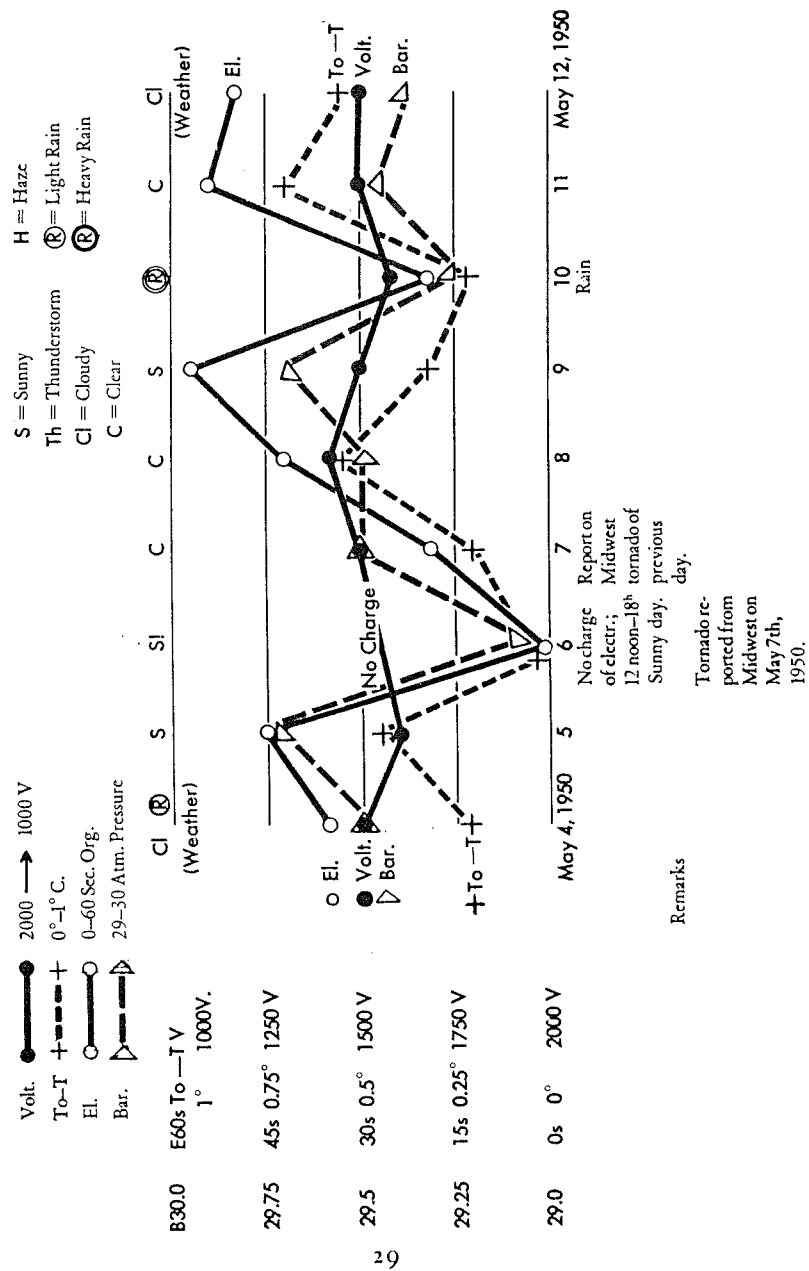


FIG. 5. ARRANGEMENT FOR MEASUREMENT OF ORGONE ENERGY FUNCTIONS IN HIGH VACUUM

METEOROLOGICAL REACTIONS OF ORGONE ENERGY IN THE VACUUM, MAY 4-12, 1950



tion than weaker persons. This is obvious since the stronger energy system will establish the energy field contact and the lumination more quickly, whereas the weaker organism will require a longer time to react.

The expression "lumination" is justified by the sensation of "soft glow" which is felt by many users of the accumulator. One should continue with the orgonotic irradiation as long as one feels comfortable and "glowing." The sensitive person will, after a while, have "had enough." This manifests itself in the feeling of "nothing happening any longer." It is explained by the fact that, in a truly self-regulatory manner, the organism will absorb only as much orgone energy as it requires. One should not compare the orgone irradiation with a mechanical filling of a barrel with water; the idea is wrong that the more energy one "pours" into the organism the better. After a certain level has been reached, the sensations become *unpleasant*. Pressure in the head, slight nausea, ill feelings all over, and dizziness are the most common signs indicating that OVER-IRRADIATION has begun. One simply leaves the accumulator and, if one has had too much, one takes some fresh air and the symptoms of overcharge quickly vanish. Under no circumstances should one sit in the accumulator for hours, or, as some people do, go to sleep in it. This can cause serious damage (severe vomiting, etc.). It is better, if necessary, to use the accumulator several times a day at shorter intervals than to prolong one sitting unnecessarily. At this stage of research, no accumulator over 3-layers should be used without medical supervision.

The size of the accumulator should fit the size of the person who uses it. The inner metal walls should not be further away from the surface of the body than approximately 2 to 4 inches. A small child in a large size accumulator would not attract enough energy. The routine average size will be suitable for most people. People taller than 6 feet need larger accumulators.

Bedridden people can replace the regular accumulator by using the special irradiation equipment constructed for use in beds. One set of layers (flat) is put under the mattress, and the curved part is put on top of the patient, the bed cover serving as an additional organic

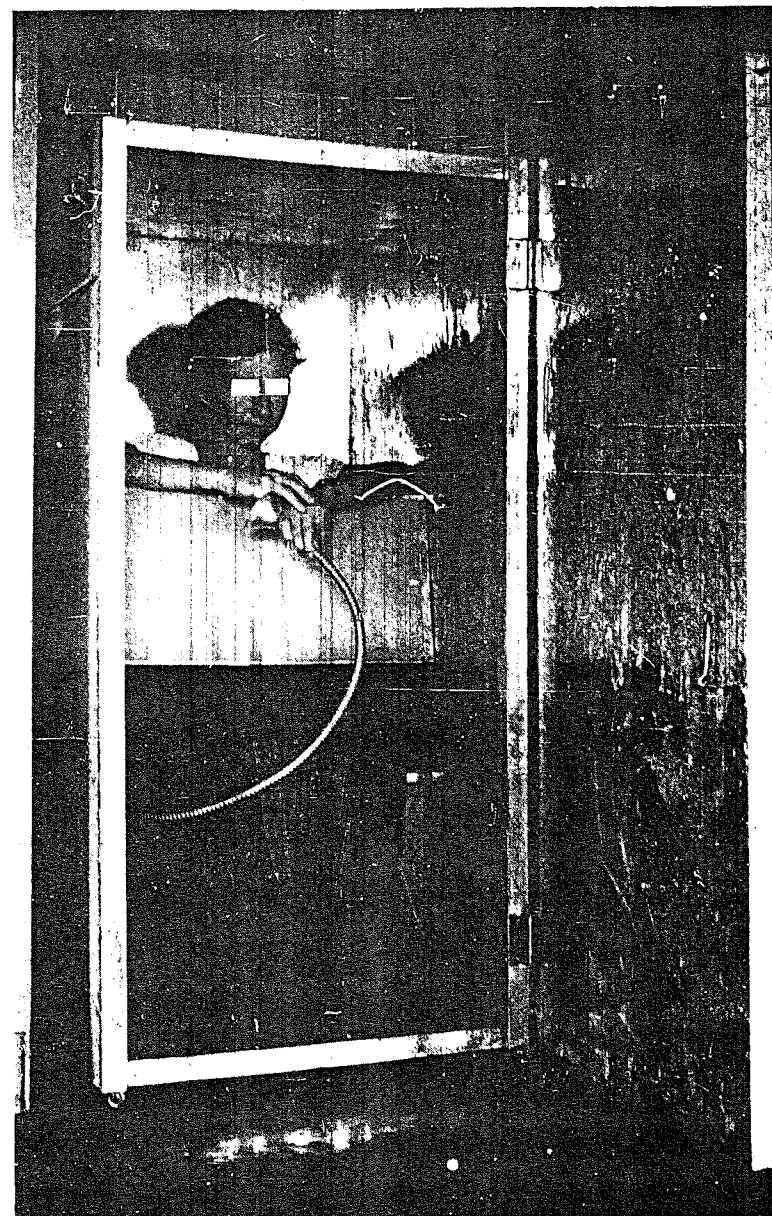


FIG. 7. AN ORGONE ENERGY ACCUMULATOR WITH CHESTBOARD AND SHOOTER IN USE



FIG. 8. AN ORGONE ENERGY BLANKET FOR USE IN BED

layer on top of the curved half of the accumulator. The dosage of orgone irradiation with *the orgone energy accumulator blanket* again depends entirely on the type of case and sickness (*cf.* fig. 8, p. 32).

It is not necessary to undress completely in the accumulator since orgone energy penetrates everything. However, one should not wear too heavy or woolen clothes since this will prevent quick contact and lumination (*cf.* fig. 7, p. 31).

THE EFFECT OF THE IRRADIATION upon the special disease is rarely a direct one. Thus, a cancerous tumor will not be affected directly or immediately. A cold will not budge on the first few sittings. A migraine or a rheumatic pain may well persist over a certain period of time. This is so because the orgone energy first must affect the total organism, the total background from which the single symptoms emerge. Only when the total organism and especially the blood system are sufficiently charged, will symptoms such as colds, headaches, etc., begin to yield. Accordingly, it is not the outer energy but the higher level of inner bio-energy which is responsible for the improvement in the symptomatic realm. A cancer tumor of the breast which did not budge for many weeks will then, within a few days, diminish and constantly decrease in size, once the total organism has reached a satisfactory level of bio-energetic charge. *The accumulator helps nature in the organism-to-help-itself.* The same type of bacteria which will not be killed in the test tube by orgone energy, will be killed within the highly-charged organism under orgone irradiation.

On the average, orgone irradiation for humans requires from five to thirty minutes daily. With regular use, the necessary time shortens. A patient beginning with half-hour sessions may end up with only ten-minute sessions. It also depends on the number of layers in the accumulator. The greater the number of layers the shorter will be the necessary irradiation time. But there is never anything mechanical about the timing of sittings.

In cases of cancer, anemia, general bio-energetic weakness ("FATIGUE"), etc., Reich blood tests should be performed at regular intervals until the normal level of bio-energy in the organism has been

reached (cf. Bibliography, No. 5i). Once in one or two months will suffice.

It should be emphasized that only prolonged and regular use of the accumulator will do the job, if it is at all possible. No result can be expected when the accumulator is used irregularly, with long intervals in between irradiations. In chronic illnesses no results can be expected in a week or two. Severe chronic colds and sinusitis will require total organismic irradiation over a period of one to two years to show the good results which it is possible to obtain. Hay fever will rarely yield during the first year, but it will most probably be at least diminished during the second or third year of regular use. This again is due to the fact that the total organism has first to function properly bio-energetically before local symptoms can yield to orgone treatment. This proves satisfactorily that the orgone energy attacks the BACKGROUND of disease, the total biosystem, and not merely the local symptom.

In the orgone energy accumulator we finally have at our disposal an appropriate medical and prophylactic tool to cope efficiently with what is usually and helplessly called DISPOSITION TO DISEASE. This "disposition" is something very concrete: IT IS THE LOW BIO-ENERGY LEVEL AND METABOLISM IN THE ORGANISM. A highly-charged organism will not develop a cold in bad weather easily; a weakly charged organism will contract a cold in a slight drizzle. A strongly-charged organism will not permit the development of local decay in the lung or in the skin; a weak one will.

THE BASIC ATTENTION SHOULD, THEREFORE, BE CENTERED UPON THE TOTAL BODY FUNCTIONING. THE REICH BLOOD TESTS ARE THE APPROPRIATE TOOLS WITH WHICH TO JUDGE THE ENERGY LEVEL OF THE ORGANISM. (Cf. Bibliography, No. 5i.)

The "Shooter"

Whereas the orgone energy accumulator becomes medically efficient through charging of the bio-energy system as a *whole*, the "shooter" affects only a local area, e.g., a cut or burn. The shooter is built according to the same principle as the big accumulator. It, too,

consists of several layers of alternating organic and metallic material, and thus is efficient in drawing and concentrating atmospheric orgone energy. This accumulated energy within the shooter is now directed through flexible iron hollow cables (most efficiently through BX cables) from which the inner wires have been removed, toward the local region to be irradiated. On small areas, e.g., about 1 sq. cm., it suffices to keep the outer end of the BX cable at the burn or cut at a distance of approximately one-eighth of an inch. On larger areas a funnel should be inserted, corresponding in size approximately to the afflicted area to be irradiated (cf. fig. 9, p. 37). Only *metal* (iron) funnels can be used; funnels made of plastic are ineffective. The intensity of the irradiation does not diminish with a larger area. In a truly self-regulatory manner more orgone energy is drawn and deflected toward the inflicted area the larger the funnel which is inserted into the outer end of the BX cable. The mechanism of the irradiation effect consists in that the particular local area draws energy from the shooter box through the BX cable. The latter should be insulated with tape or plastic, organic material on the OUTSIDE, in order to form in itself a radiating structure with metal inside and organic material outside.

At the beginning of local irradiation one feels nothing. Then slowly one begins to feel heat and prickling; if there is pain, it begins to diminish and finally to vanish, at times after a very brief period of greater intensity. Painful burns, cuts, bruises will stop smarting after a few minutes. In cases where the epidermis has been abraded and the deeper layers of the skin have been exposed, serum will appear quickly and dry out. One can follow the healing process as it runs its course. In wounds one can see within 15 minutes a hyperemia developing from the margins, the wound flattening at the bottom with the initial redness due to blood injection in the vicinity disappearing as the healing process proceeds. One should not irradiate too long. According to the size of the injury, five to twenty minutes will suffice to set the healing process into rapid motion. Once one can observe the change in the wound (color, depth, drying out, flattening) one should stop and apply the usual antiseptic remedies, and should irradiate again

after a few hours or in accordance with the severity of the injury. Even severe pain will be stopped soon after the accident if orgone energy is applied locally through the shooter. In severe cases of burns, experience has revealed the amazing fact that no blisters appear, and that the initial redness slowly disappears. The wounds heal in a matter of a few hours; severe ones need a day or two. Only chronic, advanced degenerating processes require weeks and months of daily irradiation. But here, too, severe lesions, as for instance *ulcus varicosus*, will yield to orgone energy irradiation.

One should be careful with irradiating the eyes. The cornea should not be exposed to close irradiation longer than one minute. It is always better to irradiate several times than to over-irradiate in one sitting. Orgone energy is not poured like water into a barrel. The organism absorbs healthily only the amount it can use; it regulates itself.

Eyes (*with closed lids*), the region of the sella turcica between the eyes, the heart region at the apex and at the base, the mouth, and the region of the plexus solaris should be irradiated daily while one sits in the accumulator, just long enough to feel the heat penetrating.

For larger areas, e.g., the scalp, one should use a *large* metal funnel which is insulated on the outside with cotton and tape. (Cf. fig. 11, p. 39.)

One should not expect miracles. A severe wound cannot be healed in a few minutes. Patient, repeated orgone energy irradiation will most likely do the job.

Orgone energy also *sterilizes the wound*. Microscopic observation shows that, for example, bacteria in the vagina will be immobilized after only one minute of irradiation through an inserted glass pipe filled with steel wool. Only the close vicinity of a wound should be treated with iodine or a similar disinfectant. After orgone energy irradiation a dressing with boric acid vaseline or simply vaseline jelly should be applied.

DO NOT MIX ORGONE IRRADIATION WITH OTHER, CHEMICAL APPLICATIONS. ORGONE ENERGY IS A VERY STRONG ENERGY. We do not know as yet what such a mixture can do.

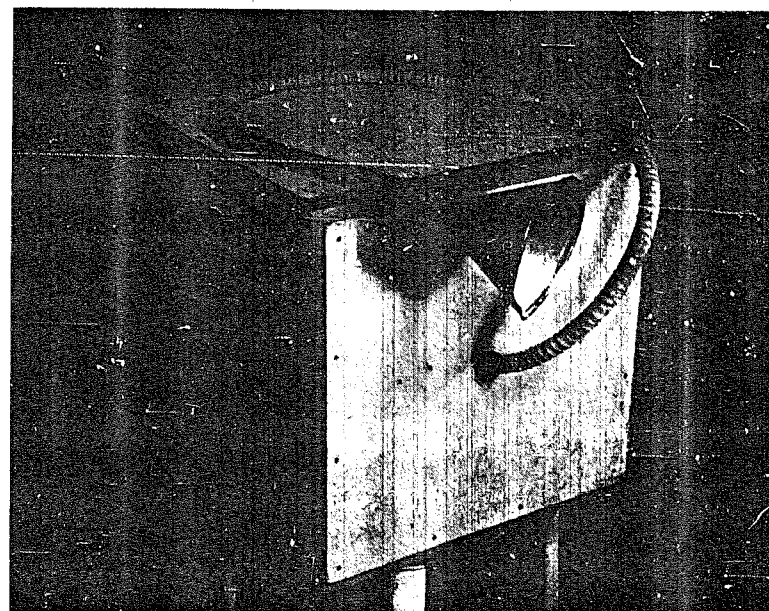


FIG. 9. THE FIRST TYPE OF ORGONE ENERGY "SHOOTER" EVER BUILT



FIG. 10. AN ORGONE ENERGY BLANKET FOR LOCAL APPLICATION



FIG. 11. AN ORGONE ENERGY FUNNEL FOR LOCAL APPLICATION

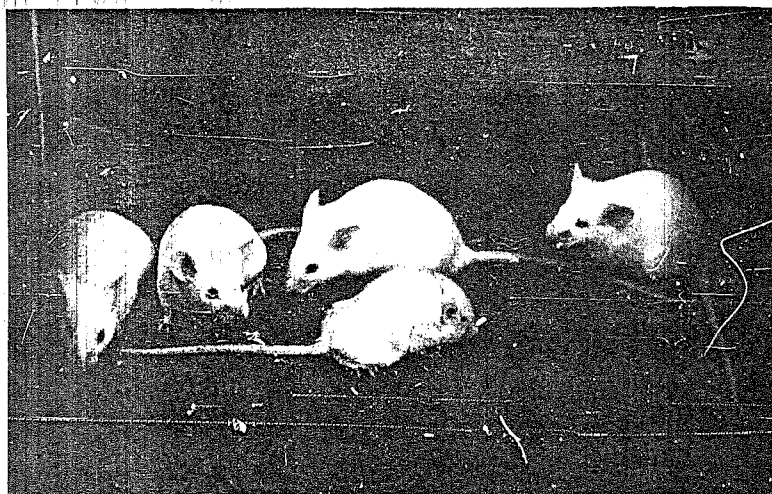


FIG. 12. LEUKEMIA MICE UNDER EXPERIMENTAL OBSERVATION

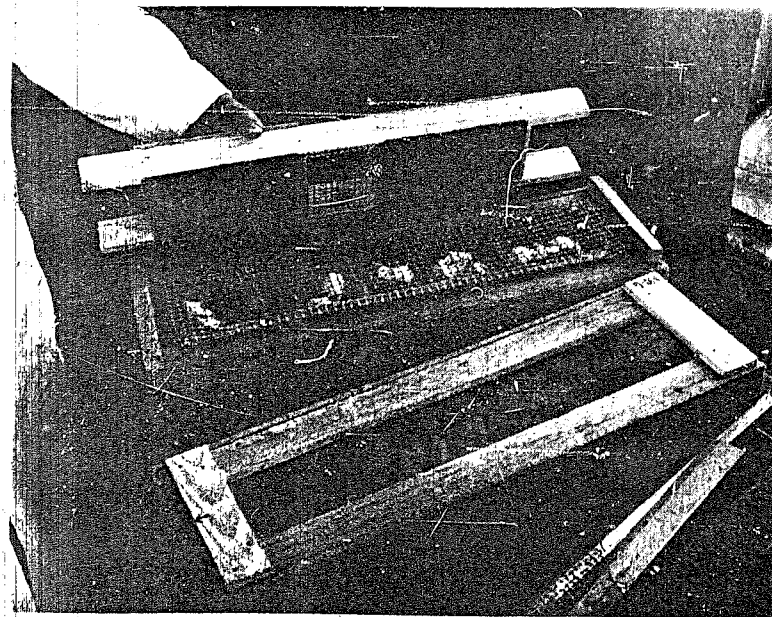


FIG. 13. EXPERIMENTAL MICE IN AN ORGONE ENERGY ACCUMULATOR

layer on top of the curved half of the accumulator. The dosage of orgone irradiation with *the orgone energy accumulator blanket* again depends entirely on the type of case and sickness (cf. fig. 8, p. 32).

It is not necessary to undress completely in the accumulator since orgone energy penetrates everything. However, one should not wear too heavy or woolen clothes since this will prevent quick contact and lumination (cf. fig. 7, p. 31).

THE EFFECT OF THE IRRADIATION upon the special disease is rarely a direct one. Thus, a cancerous tumor will not be affected directly or immediately. A cold will not budge on the first few sittings. A migraine or a rheumatic pain may well persist over a certain period of time. This is so because the orgone energy first must affect the total organism, the total background from which the single symptoms emerge. Only when the total organism and especially the blood system are sufficiently charged, will symptoms such as colds, headaches, etc., begin to yield. Accordingly, it is not the outer energy but the higher level of inner bio-energy which is responsible for the improvement in the symptomatic realm. A cancer tumor of the breast which did not budge for many weeks will then, within a few days, diminish and constantly decrease in size, once the total organism has reached a satisfactory level of bio-energetic charge. *The accumulator helps nature in the organism to help itself.* The same type of bacteria which will not be killed in the test tube by orgone energy, will be killed within the highly-charged organism under orgone irradiation.

On the average, orgone irradiation for humans requires from five to thirty minutes daily. With regular use, the necessary time shortens. A patient beginning with half-hour sessions may end up with only ten-minute sessions. It also depends on the number of layers in the accumulator. The greater the number of layers the shorter will be the necessary irradiation time. But there is never anything mechanical about the timing of sittings.

In cases of cancer, anemia, general bio-energetic weakness ("FATIGUE"), etc., Reich blood tests should be performed at regular intervals until the normal level of bio-energy in the organism has been

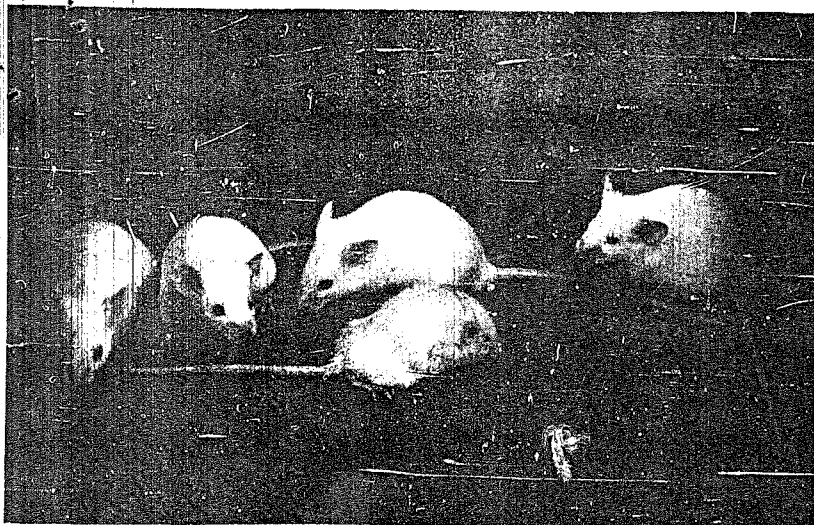


FIG. 12. LEUKEMIA MICE UNDER EXPERIMENTAL OBSERVATION

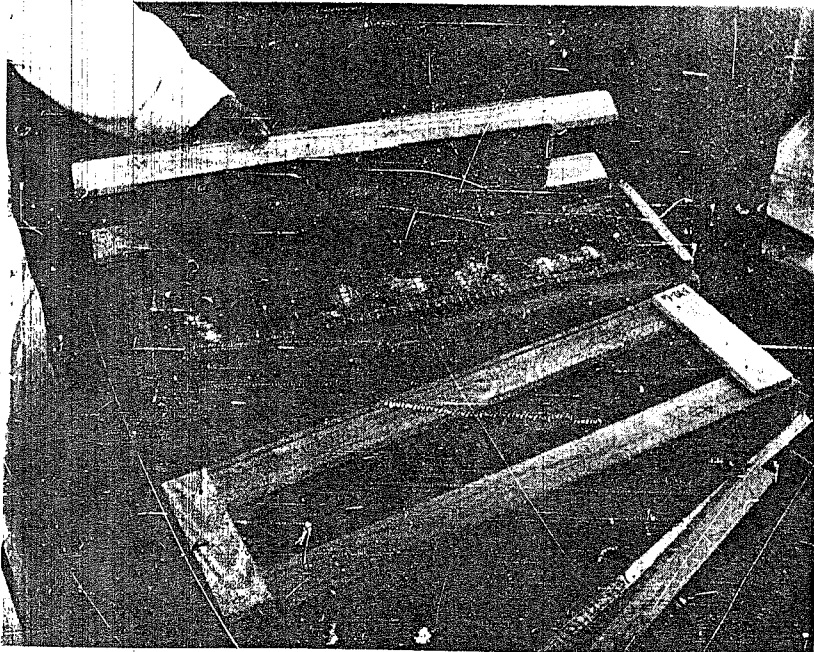


FIG. 13. EXPERIMENTAL MICE IN AN ORGONE ENERGY ACCUMULATOR

Vitamins, iron colloids taken internally, penicillin, and other biologically derived drugs are in agreement with orgone energy. On the other hand, the merely inorganic compounds such as the sulfa drugs, should under no circumstances be applied, either externally or internally, since *they hamper the regenerative processes induced by orgone energy*. Morphine should be avoided if possible, and if total orgone energy irradiation can alleviate the pain.

The local 3- to 5-fold shooter can easily be carried around and taken to any place wherever necessary. A 3- to 4-foot pipe will suffice to reach any region of the organism.

Open, *inner* wounds should be irradiated with the shooter *after* the operation, for disinfection and application of healing energy.

Each home should have a shooter. It can easily be built by the future user. One should strive to collect practical experience in the use of the shooter at home on every occasion that offers itself. *do it*

Basic Indications of Orgone Energy Application

It has been ascertained that in the average case the charging process will regulate itself. It should be stressed again that orgone energy cannot be applied mechanistically, by timing or rigid measurement. The orgone energy to be applied is just as fluid functionally as is the organism which absorbs it. There are not two organisms equal in charge or capacity for orgone absorption. In most cases an uncomfortable feeling, a sensation of dislike, a pressure in the head or nausea will indicate that the optimum dose has been surpassed. It is very similar to the intake of food. Nobody weighs exactly the piece of meat or the amount of vegetables to be eaten in advance. The healthy organism knows when to stop eating because of feelings of discomfort or a distinct feeling of having "had enough."

However, there are cases where we do not rely on these subjective sensations, where we are careful in advising the patient not to eat more than a certain amount in spite of persistent hunger, or to drink only a small amount of water. The same rule applies in certain biopathies with respect to application of orgone energy.

We can generally divide the biopathies into two groups. One is

generally characterized by a chronically *too low level of energy*: UNDERCHARGED BIOPATHIES. The second is generally characterized by a chronic surplus of bio-energy charge: OVERCHARGED BIOPATHIES. It is obvious that the first will require different rules of orgone application than the second group.

A. UNDERCHARGED BIOPATHIES

Here the sensation of "having had enough" bio-energy will most likely be totally absent. The tolerance of charge will be high. Undercharged patients are capable of sitting in even a 10-fold accumulator for hours without any sensations at all. Only after many weeks of continuous daily irradiation does some degree of subjective sensitivity return, strong enough to tell the patient that he has had enough. There are definite diseases and symptomatic syndromes which correspond to the first group:

- a) *Chronic depressives and melancholics*;
- b) *chronically fatigued people*;
- c) undernourished patients;
- d) cancer, shrinking biopathies, especially the fully shrinking type (see Bibliography, Nos. 5h. and 5j.).
- e) And all cases where the peripheral energy field is low and weak.

In these cases the danger of over-irradiation is absent or not acute until after the normal energy level has been reached.

B. OVERCHARGED BIOPATHIES

The second group, of overcharged patients, consists of

- a) *all kinds of vascular hypertensives*;
- b) high blood pressure;
- c) hysterical characters;
- d) cases with severe acute sexual stasis.

In these cases the energy level in the organism is very high and the tolerance of orgone intake low. After a few minutes severe discomfort may set in. Particular caution and attention should be applied in orgone irradiation of the following diseases:

- a) Decompensated heart diseases;

- b) blood pressure over 150 systolic pressure;
- c) brain tumors;
- d) arteriosclerosis;
- e) cases with a history of apoplectic attacks;
- f) skin inflammation, conjunctivitis.

In these cases the first irradiations should be given in short sittings, with the pulse action under constant control. *We emphasize again that one should not use an orgone energy accumulator with more than 3 layers without specialized medical supervision, particularly in cases of overcharge.* The length of the sittings can be slowly increased from time to time, until one is sure that no collapse or sudden total contraction due to sudden expansion will occur. Bursting of blood vessels, vegetative shock, stoppage of heartbeat, are entirely possible if in such cases over-irradiation by application of, say, a 20-fold accumulator takes place. No death due to over-irradiation has yet occurred in ten years of orgone energy application, but its possibility cannot be entirely excluded. One should especially watch out for high blood pressure cases which could react to the expansive vagatonic influence of orgone energy with a sharp rise instead of decrease of pressure.

Specialized medical supervision is absolutely required in the following cases:

- a) In all diseases subsumed under Group B;
- b) whenever orgone energy is applied to diseases hitherto not studied with respect to orgone energy effects;
- c) in all cases where overcharge through inappropriate use of the accumulator has occurred;
- d) in all cases which require an accumulator of more than 3-fold.

These main lines of caution may suffice. In the average case, the irradiation with orgone energy is harmless. It is a *body-own energy*, and not a foreign kind of radiant energy which is applied. However, experiments on over-irradiation are being conducted at Orgonon to determine possible reactions of the blood cell system to chronic overcharge.

Orgone irradiation can be applied with great benefit and without any danger, even with over-irradiation, in the following diseases:

Fatigue, anemia, cancer biopathy, with the exception of tumors of the brain and liver, *acute and chronic colds, hay fever, rheumatism, arthritis, chronic ulcers*, any kind of lesion, abrasion, wounds, burns, sinusitis, and some types of migraine.

NEUROSES CANNOT BE CURED WITH PHYSICAL ORGONE ENERGY. Only the biopathic somatic background and certain somatic consequences of severe neuroses can be alleviated or diminished.

Further intensive research is indispensable for the establishment of the indications of orgone energy treatment in diseases heretofore not treated with orgone energy. Research is already underway or planned on such diseases—to mention a few—as poliomyelitis, multiple sclerosis, and leukemia.

8. REQUIREMENTS FOR FORMING AN OPINION ON THE ORGONE ENERGY ACCUMULATOR

It happens again and again that painstakingly elaborated and carefully presented organomic findings are met by mere "opinions" without any basis in observations or experiments. If such opinions are proclaimed by a chemist or a physician, the layman accepts them as an "authoritative" judgment, no matter whether the opinion is based on observation or not. Thus a *wrong* kind of "public opinion" develops.

Since "authority" is thus being misused in the interest of unfair business practices or politics, we must insist that whoever utters an opinion on the medical or other applications of the orgone energy first demonstrates that he followed the rules laid down for the observation of organotic functions. In order to obtain a clear and reliable scientific judgment on the functions of the orgone energy accumulator, one must first:

1. Abandon any attempt at forming opinions without having first worked with the orgone energy.
2. Use the accumulator regularly and become acquainted with the functional manner in which it works, e.g., changes with length of

dosage, bio-energetic charge of the user, different atmospheric conditions, etc.

3. Put sick people in orgone energy accumulators and see what the accumulator can do in different kinds of diseases, wounds, and burns.

4. Measure and chart over a long period of time the organomic temperature difference and the slower electroscopic discharge within the accumulator.

5. Make observations in a metal-lined orgone energy darkroom.

6. Last but not least, understand that this examination of organomic findings must proceed from the premises of orgone theory, and not from any other standpoint. An airplane must be criticized and examined as to its ability to fly and not as to its ability to ride on the ground. Orgone energy cannot be judged from the standpoint of magnetism or chemistry. An authority is one who knows what he is dealing with, and not one who never has learned what he thinks he already knows. A physicist is no authority on the orgone energy accumulator unless he has diligently studied the accumulator, used it regularly, felt the subjective reactions, and measured the objective functions. *Thus, there are no authorities in the field of organomy save those who have continuously studied orgone energy functions.*

Any and every opinion uttered in regard to the validity of the orgone energy accumulator must be tested by whether or not the stater of the opinion has met the requirements listed above. To be fully aware of the great responsibilities involved is a crucial part of the job to be done.

9. PUBLIC USE OF AND RESPONSIBILITY TOWARD ORGONE ENERGY RESEARCH

Orgone energy can be had like water or air and is present in infinite quantities. All that is necessary to bring it to the consumer is a mechanism for *concentrating* it; this is, as has been shown, what the accumulator does. Arrangements must be made so that even the poorest people can avail themselves of the concentrated orgone energy.

Thus there is a responsibility on the part of organomic workers to

make the orgone energy accessible to the widest number of people. *But there is also a responsibility on the part of the benefitters from orgone energy to help secure the future of orgone energy investigations.* Specifically, it is necessary to prevent the reckless exploitation of orgone energy both through ruthless profiteering and through indifference toward the research on the part of its benefitters. In line with this basic attitude, it was decided in 1942 to allow individuals to use the orgone energy accumulator in their homes for a small monthly contribution to the Orgone Research Fund. This remains the policy to the present day; contributions for the use of the orgone energy accumulator are now paid to The Wilhelm Reich Foundation, a *public non-profit institution.* (Cf. "The Charter of The Wilhelm Reich Foundation," *Orgone Energy Bulletin*, October, 1950, p. 59.) In this fashion the orgone accumulator *works for orgone energy research.* It is neither exploited by the distributor nor used in an irresponsible way by the consumer, without regard for the total scientific background of which it is one vital product. The consumers receive the benefits of new developments and improvements in the use and construction of the orgone energy accumulator; in turn, their monthly contributions have helped to subsidize the basic research task.

There is no intention of creating a monopoly in the construction of the orgone energy accumulator. On the contrary, no such monopoly is acceptable. Manufacturers can take over the construction of orgone energy accumulators on a mass scale against a reasonable royalty, and for a *reasonable* profit on each accumulator. Plans are also underway to supply information to those who wish to build their own accumulators. But, again, this must be done in such a manner that the basic research job—which is growing rapidly and which requires increasingly large amounts of money to support—is financially secured. We do not intend to have happen to orgone energy what has been the fate of so many other discoveries, namely, that everyone profits on it save the research which made it possible.

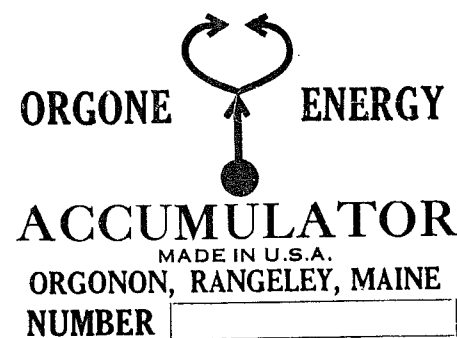
The Wilhelm Reich Foundation will continue to maintain a central pilot plant where new arrangements and tools can be tested and elaborated. Units equipped in the techniques of the Reich Blood

Tests will be gradually established. Special courses for instructors will be given who will return to their localities and instruct locally.

Thus, the policy is to decentralize orgone energy use and make it internationally accessible. But—to protect the public as well as the science of organomy—no one will obtain information who refuses to cooperate in this undertaking. The names of profiteers and swindlers will be exposed in publications of The Wilhelm Reich Foundation. Those who proceed on their own for purely personal purposes will also soon learn that orgone energy functions according to new laws, most of which are accessible only to those employed in continuous work on organomic functions.

We regret to have to sound these warnings. They are, however, necessary in the face of the all-too-prevalent greed when it is a question of exploiting human need and misery, and in the face of the irresponsibility so evident when it is a question of helping a basic research task and not only taking from it. The discovery of the life energy should be made available to all, but it also must be protected from irresponsibility. That is our double task.

Further information concerning the orgone energy accumulator, the Reich Blood Tests, and medical supervision of accumulator use, can be obtained from The Wilhelm Reich Foundation, Orgonon, Rangeley, Maine.



THE ORGONE ENERGY ACCUMULATOR LABEL

BIBLIOGRAPHY OF WORKS ON ORGONE ENERGY

I. WILHELM REICH, M.D.

1. EXPERIMENTELLE ERGEBNISSE UEBER DIE ELEKTRISCHE FUNKTION VON SEXUALITAET UND ANGST. Abhandl. zur personellen Sexualökonomie, Nr. 5, Sexpol Verlag, 1937. (Out of print.)
2. DIE BIONE. Klinische und experimentelle Berichte, Nr. 6, Sexpol Verlag, 1938. (Out of print.)
 - a. Communication to the French Academie de Science on Bion Experiment No. VI, January, 1937, Ch. IV.
3. BION EXPERIMENTS ON THE CANCER PROBLEM. DREI VERSUCHE AM STATISCHEN ELEK ROSKOP. Klinische und experimentelle Berichte, Nr. 7, Sexpol Verlag, 1939. (Out of print.)
4. THE DISCOVERY OF THE ORGONE, vol. 1: THE FUNCTION OF THE ORGASM, 2nd edition, 1948.
5. THE DISCOVERY OF THE ORGONE, vol. 2: THE CANCER BIOPATHY, 1948.
 - a. "The Orgone Energy Vesicles (Bions)," pp. 11-51. First published: *International Journal of Sex economy and Orgone Research (IJSO)* 1, 1942.
 - b. "Experiment XX," pp. 51-63. First published: *IJSO* 4, 1945.
 - c. "The Visualization of the Atmospheric Orgone," pp. 78-83. First published: *IJSO* 1, 1942.
 - d. "The Mechanism of the Concentration of the Atmospheric Orgone," pp. 95-96. First published: *IJSO* 2, 1943.
 - e. "Thermal Orgonometry," pp. 97-107. First published: *IJSO* 2, 1943 and *IJSO* 3, 1944.
 - f. "Electroscopical Orgonometry," pp. 108-111. First published: *IJSO* 2, 1943 and *IJSO* 3, 1944.
 - g. "Quantitative Determination of the Orgone," pp. 112-120. First published: *IJSO* 3, 1944.
 - h. "The Carcinomatous Shrinking Biopathy," pp. 128-168. First published: *IJSO* 1, 1942 and *IJSO* 2, 1943.
 - i. "Orgone-biophysical Blood Tests," pp. 144-145. First published: *IJSO* 1, 1942 and *IJSO* 3, 1943.
 - j. "Anorgonia in the Carcinomatous Shrinking Biopathy," pp. 291-344. First published: *IJSO* 4, 1945.
6. "Orgonotic Pulsation," *IJSO* 3, 1944, pp. 97-150.
7. CHARACTER ANALYSIS, 3rd Enlarged Edition, "The Schizophrenic Split," Ch. XVI, pp. 398-508, 1949. (Contains description of the use of the orgone energy accumulator in a case of psychosis.)
8. "A Motor Force in Orgone Energy." *Orgone Energy Bulletin*, January, 1949, pp. 7-11.
9. "Further Characteristics of Vacor Lumination." *Orgone Energy Bulletin*, July, 1949, pp. 97-99.
10. "Public Responsibility in the Early Diagnosis of Cancer." *Ibid.*, pp. 110-116.
11. "Cosmic Orgone Energy and 'Ether.'" *Orgone Energy Bulletin*, October, 1949, pp. 143-159.
12. ETHER, GOD AND DEVIL, *Annals of the Orgone Institute*, No. 2, 1949.
13. "Orgonomic and Chemical Cancer Research. A Brief Comparison." *Orgone Energy Bulletin*, July, 1950, pp. 139-142.

14. "Orgonomic Literature Ordered from Russia." *Orgone Energy Bulletin*, July, 1950, pp. 152-154.
15. "On Scientific 'Control.'" *Ibid.*, p. 155.
16. "Orgonometric Equations: 1. General Form." *Orgone Energy Bulletin*, October, 1950, pp. 161-183.
17. "Meteorological Functions in Orgone-charged Vacuum Tubes." *Ibid.*, pp. 184-193.
18. "The Orgonomic Anti-Nuclear Radiation Project (ORANUR)." *Orgone Energy Emergency Bulletin*, No. 1, December, 1950.
19. "Cancer Cells' in Experiment XX." *Orgone Energy Bulletin*, January, 1951, pp. 1-3.
20. "The Anti-Nuclear Radiation Effect of Cosmic Orgone Energy." *Orgone Energy Bulletin*, January, 1951, pp. 61-63.
21. "Complete Orgonometric Equations." *Orgone Energy Bulletin*, April, 1951.
22. "The Storm of November 25th and 26th, 1950." *Ibid.*
23. "The Leukemia Problem, I: Approach." *Ibid.*

II. WALTER HOPE, M.D.

24. "My Experiences with the Orgone Accumulator." *Orgone Energy Bulletin*, January, 1949, pp. 12-22.
25. "Further Experiences with the Orgone Accumulator." *Orgone Energy Bulletin*, January, 1950, pp. 16-21.

III. SIMEON J. TROPP, M.D.

26. "The Treatment of a Mediastinal Malignancy with the Orgone Accumulator." *Orgone Energy Bulletin*, July, 1949, pp. 100-109.
27. "Orgone Therapy of an Early Breast Cancer." *Orgone Energy Bulletin*, July, 1950, pp. 131-138.
28. "Limited Surgery in Orgonomic Cancer Therapy." *Orgone Energy Bulletin*, April, 1951.

IV. THEODORE P. WOLFE, M.D.

29. "Again the Common Cold." *Annals of the Orgone Institute*, No. 1, 1947, p. 138.
30. EMOTIONAL PLAGUE VERSUS ORGONE BIOPHYSICS, 1948.

V. OLA RAKNES, Ph.D.

31. "Orgone Therapy." A lecture delivered before the Medical Students Union, Oslo, Norway, February 24th, 1950.

VI. WILLIAM A. ANDERSON, M.D.

32. "Orgone Therapy in Rheumatic Fever." *Orgone Energy Bulletin*, April, 1950, pp. 71-73.

VII. EMANUEL LEVINE, M.D.

33. "The Treatment of a Hypertensive Biopathy with the Orgone Energy Accumulator." *Orgone Energy Bulletin*, January, 1951, pp. 23-34.

VIII. HELEN E. MACDONALD, Ph.D.

34. "Wilhelm Reich's Concept, 'Cancer Biopathy.'" *Orgone Energy Bulletin*, July, 1950, pp. 124-130.

IX. R. H. ATKIN

35. "The Second Law of Thermodynamics and the Orgone Accumulator." *Orgone Energy Bulletin*, April, 1949, pp. 52-60.

36. "Mathematical Questions without Answers." *Orgone Energy Bulletin*, April, 1951.

X. JAKOB BAUMANN

37. "Some Observations of the Atmospheric Orgone Energy." *Orgone Energy Bulletin*, April, 1950, pp. 74-83.

XI. DR. ROGER DU TEIL

38. "Life and Matter. A Series of Three Experiments." Published in *DIE BIONE*.

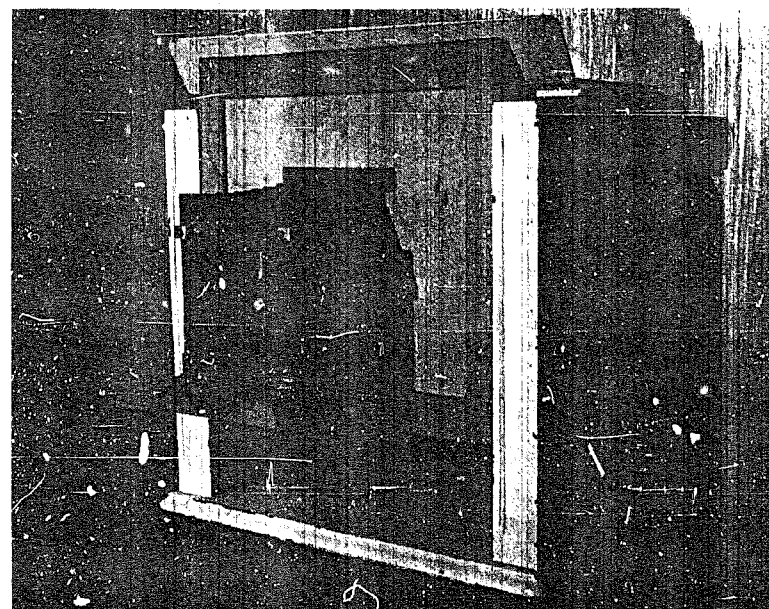
XII. N. WEVRICK, M.D.

39. "Physical Orgone Therapy of Diabetes." *Orgone Energy Bulletin*, April, 1951.

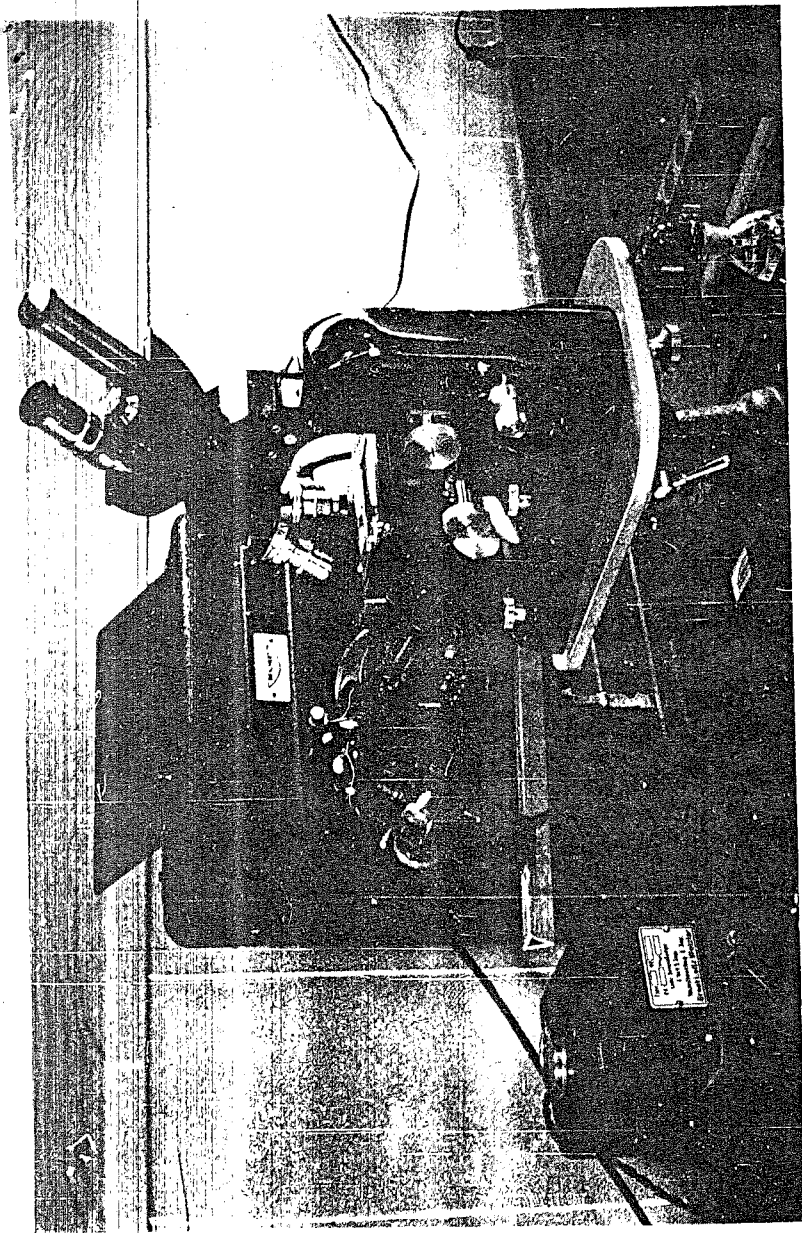
XIII. MYRON R. SHARAF

40. "From the History of Science." *Orgone Energy Bulletin*, January, 1951, pp. 35-38.

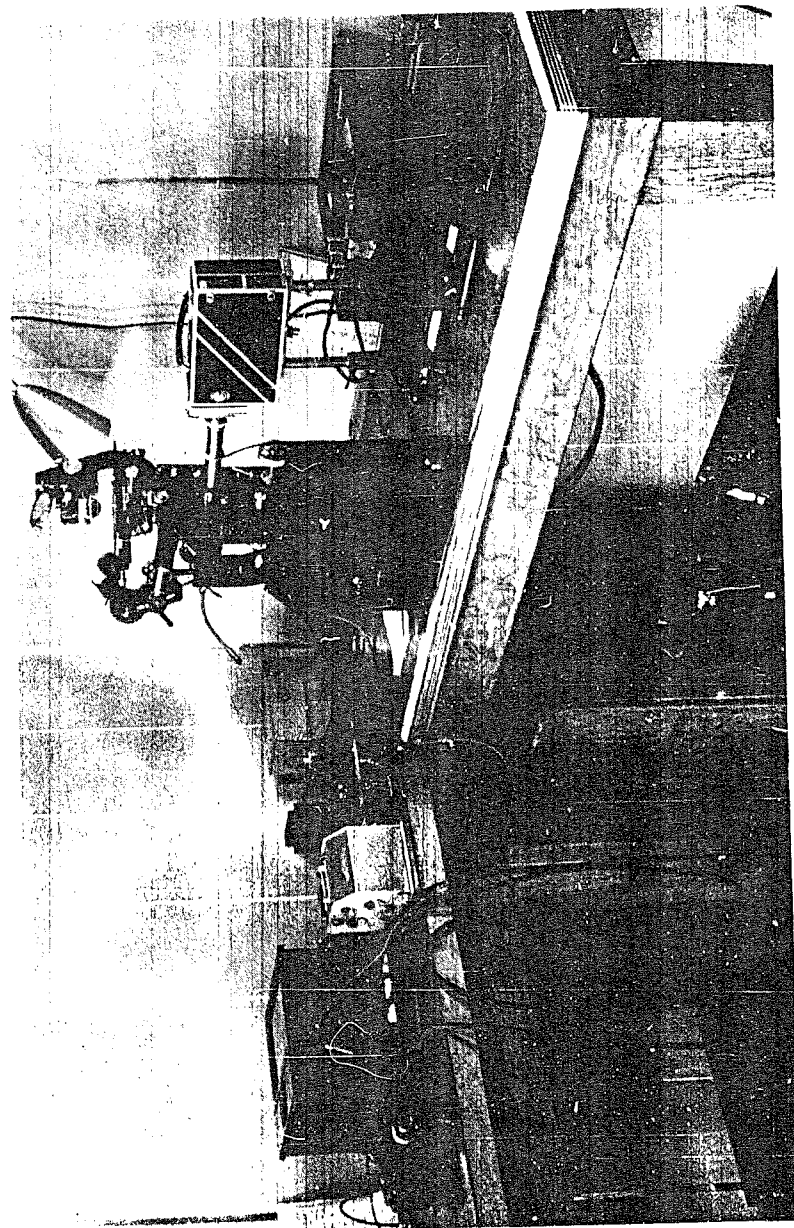
Unless otherwise stated, all books and periodicals are published by and available from the Orgone Institute Press, publishing house of the Wilhelm Reich Foundation. Address: P. O. Box 153, Orgonon, Rangeley, Maine, U. S. A.



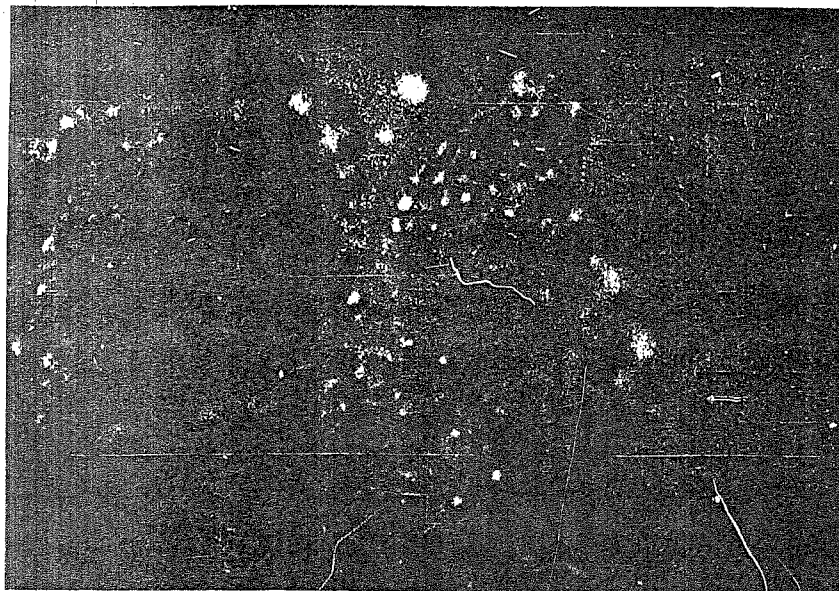
DEVICE FOR VISUAL OBSERVATION OF ORGONE ENERGY



ARRANGEMENTS FOR HIGHPOWER MAGNIFICATION (5000X) AND FLUOROMICROSCOPY



MICROPHOTOGRAPHIC AND MICROFILMATIC EQUIPMENT



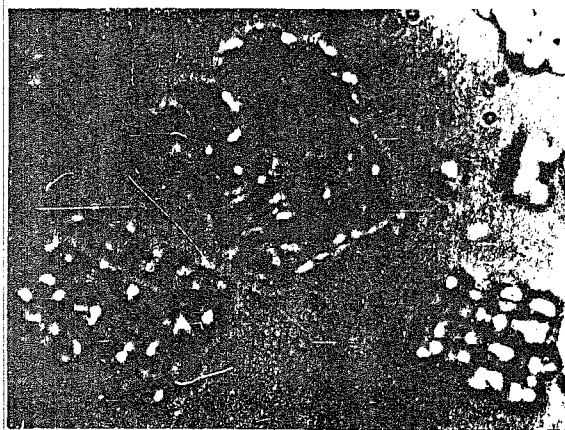
HEAP OF BION VESICLES IN AN ADVANCED STATE OF ORGANIZATION

The discovery of the bions which represent transitional forms from the nonliving to the living solved the riddle of biogenesis and led to the solution of the problem of the cancer cell. (Cf. Bibliography, No. 5a.)

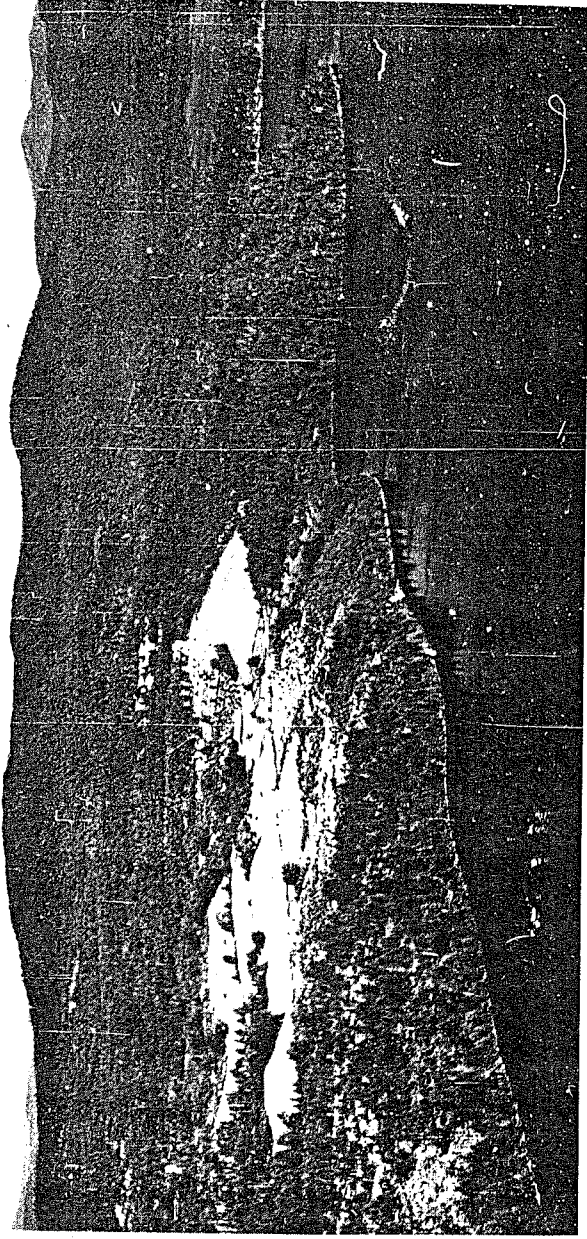


COMPLETELY ORGANIZED PROTOZOON ("Org-Protozoon") NOT YET DETACHED FROM THE GRASS BLADE. In a state of expansion. Filmed at about 3000x. Note the bionous-vesicular structure of the protoplasm.

C
67263
R272p
#3



CULTURES OF SAND
BIONS. The intense
radiation of these
Bions later led to the
discovery of the
Cosmic Orgone En-
ergy.



AIR VIEW OF ORGONON, RANGELEY, MAINE